



## **Lack of skeletal muscle IL-6 affects pyruvate dehydrogenase activity at rest and during prolonged exercise**

Gudiksen, Anders; Schwartz, Camilla Lindgren; Bertholdt, Lærke; Joensen, Ella; Knudsen, Jakob Grunnet; Pilegaard, Henriette

*Published in:*  
P L o S One

*DOI:*  
[10.1371/journal.pone.0156460](https://doi.org/10.1371/journal.pone.0156460)

*Publication date:*  
2016

*Document version*  
Publisher's PDF, also known as Version of record

*Citation for published version (APA):*  
Gudiksen, A., Schwartz, C. L., Bertholdt, L., Joensen, E., Knudsen, J. G., & Pilegaard, H. (2016). Lack of skeletal muscle IL-6 affects pyruvate dehydrogenase activity at rest and during prolonged exercise. *P L o S One*, 11(6), [e0156460]. <https://doi.org/10.1371/journal.pone.0156460>

RESEARCH ARTICLE

# Lack of Skeletal Muscle IL-6 Affects Pyruvate Dehydrogenase Activity at Rest and during Prolonged Exercise

Anders Gudiksen\*, Camilla Lindgren Schwartz, Lærke Bertholdt, Ella Joensen, Jakob G. Knudsen, Henriette Pilegaard

Section for cell biology and physiology, Department of Biology, University of Copenhagen, Copenhagen, Denmark

\* [anders.gudiksen@bio.ku.dk](mailto:anders.gudiksen@bio.ku.dk)



**OPEN ACCESS**

**Citation:** Gudiksen A, Schwartz CL, Bertholdt L, Joensen E, Knudsen JG, Pilegaard H (2016) Lack of Skeletal Muscle IL-6 Affects Pyruvate Dehydrogenase Activity at Rest and during Prolonged Exercise. PLoS ONE 11(6): e0156460. doi:10.1371/journal.pone.0156460

**Editor:** Andrew Philp, University of Birmingham, UNITED KINGDOM

**Received:** February 9, 2016

**Accepted:** May 13, 2016

**Published:** June 21, 2016

**Copyright:** © 2016 Gudiksen et al. This is an open access article distributed under the terms of the [Creative Commons Attribution License](https://creativecommons.org/licenses/by/4.0/), which permits unrestricted use, distribution, and reproduction in any medium, provided the original author and source are credited.

**Data Availability Statement:** All relevant data are within the paper and its Supporting Information files.

**Funding:** This work was supported by Lundbeckfonden: R93-2011-8974, [www.lundbeckfonden.com/](http://www.lundbeckfonden.com/); Danish Agency for Science, Technology and Innovation, DFF-1323-00317, <http://ufm.dk/en/the-minister-and-the-ministry/organisation/the-danish-agency-for-science-technology-and-innovation/contact>. The funders had no role in study design, data collection and analysis, decision to publish, or preparation of the manuscript.

## Abstract

Pyruvate dehydrogenase (PDH) plays a key role in the regulation of skeletal muscle substrate utilization. IL-6 is produced in skeletal muscle during exercise in a duration dependent manner and has been reported to increase whole body fatty acid oxidation, muscle glucose uptake and decrease PDHa activity in skeletal muscle of fed mice. The aim of the present study was to examine whether muscle IL-6 contributes to exercise-induced PDH regulation in skeletal muscle. Skeletal muscle-specific IL-6 knockout (IL-6 MKO) mice and floxed littermate controls (control) completed a single bout of treadmill exercise for 10, 60 or 120 min, with rested mice of each genotype serving as basal controls. The respiratory exchange ratio (RER) was overall higher ( $P < 0.05$ ) in IL-6 MKO than control mice during the 120 min of treadmill exercise, while RER decreased during exercise independent of genotype. AMPK and ACC phosphorylation also increased with exercise independent of genotype. PDHa activity was in control mice higher ( $P < 0.05$ ) at 10 and 60 min of exercise than at rest but remained unchanged in IL-6 MKO mice. In addition, PDHa activity was higher ( $P < 0.05$ ) in IL-6 MKO than control mice at rest and 60 min of exercise. Neither PDH phosphorylation nor acetylation could explain the genotype differences in PDHa activity. Together, this provides evidence that skeletal muscle IL-6 contributes to the regulation of PDH at rest and during prolonged exercise and suggests that muscle IL-6 normally dampens carbohydrate utilization during prolonged exercise via effects on PDH.

## Introduction

Skeletal muscle possesses a remarkable ability to regulate substrate use with changing substrate availability and energy demands [1,2]. As the Randle cycle originally proposed [3], lipids and carbohydrates (CHO) play competitive but equally essential roles as substrate in energy production in muscle. The coordinated dynamic switch between these substrates is vital to sustaining ATP production during prolonged metabolic challenges such as exercise. The demand for energy supply increases many fold over resting state requirements at the onset of exercise and

**Competing Interests:** The authors have declared that no competing interests exist.

simultaneous induction of numerous metabolic pathways are initiated across tissues in order to increase both fat and carbohydrate availability and oxidation [4,5]. During prolonged low to moderate intensity exercise, a reciprocal shift from CHO to lipid oxidation occurs in skeletal muscle in order to spare muscle glycogen stores and hence prolong the ability for the muscle to contract [6,7]. However, the molecular mechanisms behind this remain to be elucidated.

The pyruvate dehydrogenase complex (PDC) represents the only point of entry for CHO derived fuel into the mitochondria for complete oxidation [8,9] and is therefore seen as a metabolic gatekeeper. Located within the mitochondrial matrix, the PDC exerts its role by catalyzing the rate-limiting and irreversible decarboxylation of pyruvate thereby connecting glycolysis with the Krebs cycle. The PDC is composed of multiple copies of the three enzymatic subunits E1, E2, and E3, where the tetrameric ( $2\alpha/2\beta$ ) E1 enzyme, also termed pyruvate dehydrogenase (PDH), is the initial catalyst in the decarboxylation step (Harris, 2001). Covalent modifications by means of phosphorylation of at least four different serine sites (site 1: Ser293; site 2: Ser300; site 3: Ser232, and site 4: Ser295) on the E1 enzyme have so far been thought to be the main regulatory mechanism controlling the activity of the PDC, although allosteric regulation by the substrates, pyruvate and  $\text{NAD}^+$ , and the products, acetyl-CoA and NADH, as positive and negative allosteric effectors, respectively, may also contribute [10–12]. The activity of PDH in its active form (PDHa activity) is inhibited by phosphorylation catalyzed by 4 isoforms of PDH kinases (PDK) and stimulated by dephosphorylation catalyzed by 2 isoforms of PDH phosphatases (PDP), of which PDK2 and PDK4 and the  $\text{Ca}^{2+}$ -sensitive PDP1 have been suggested to be the most highly expressed isoforms in skeletal muscle [13,14]. PDHa activity is rapidly increased within the first minutes of exercise strongly correlated with exercise intensity [15–17]. In addition, PDHa activity has been shown to decrease after 2h of exercise in humans [12,18] reflecting a dominant reliance on CHO at the onset of exercise which gradually decreases over time as FFA available and lipid oxidation increase [7,18,19]. Furthermore, the exercise-induced regulation of PDHa activity has been shown to be associated with opposite changes in PDH phosphorylation in human skeletal muscle [19–21] indicating phosphorylation as an important regulatory mechanism in the regulation of PDH. Moreover, recent studies have provided evidence for acetylation of PDH-E1 $\alpha$ , with the  $\text{NAD}^+$ -dependent deacetylase sirtuin 3 (SIRT3) shown to target PDH-E1 $\alpha$ , possibly playing an important role in maintaining the tight control of the complex [22,23].

Although the regulation of PDHa activity through post-translational modifications is well established, the signaling pathways inducing these modifications remain to be fully investigated. Previous studies suggest that interleukin (IL) 6 may play a role. Thus, human studies have shown that IL-6 is produced in and released from skeletal muscle during exercise in a duration and intensity dependent manner [24,25]. Furthermore, IL-6 infusion in humans has been shown to increase skeletal muscle fat oxidation [26], and some studies link IL-6 to augmented glucose uptake during exercise in humans [27,28], although others report no correlation between plasma IL-6 concentrations and glucose uptake in human [29] and mouse muscle [30]. In addition, injections with physiologically relevant doses of recombinant IL-6 have been shown to decrease PDHa activity in mouse skeletal muscle during fed conditions [31] and rodent studies have indicated that IL-6 activates AMP activated protein kinase (AMPK) [27,32]. Moreover, because lack of AMPK $\alpha$ 2 has been shown to enhance PDHa activity in mouse skeletal muscle [33], a regulatory metabolic axis may exist between IL-6, AMPK, and PDH during exercise. Taken together, IL-6 seems to be a potential candidate for regulating skeletal muscle PDH during prolonged exercise.

The purpose of this present study was to test the hypothesis that skeletal muscle IL-6 contributes to the regulation of PDH in mouse skeletal muscle at rest as well as during prolonged exercise and that this is associated with IL-6 mediated regulation of AMPK.

## Methods

### Animals

Male C57BL/6 mice carrying loxP inserts that flanked exon 2 of the IL-6 gene as previously described [34] were crossbred with C57BL/6 mice carrying the cre recombinase gene under control of the myogenin promoter generating mice carrying the loxP inserts (floxed), serving as control mice, and skeletal muscle-specific IL-6 knockouts (IL-6 MKO) as previously shown [35]. Animals were maintained on a 12:12 light-dark cycle at 22°C with ad libitum access to water and chow diet (Altromin 1314F, Brogaarden, Lyngø, Denmark) and were therefore in a fed state before the exercise intervention. All experiments were approved by the Danish Animal Experimental expectorate and complied to the European Convention for the protection of vertebrate animals used for experiments and other scientific purposes (Council of Europe no. 123. Strasbourg, France 1985).

### Endurance test protocol

Mice also included in another study (Knudsen et al., 2015) were used to estimate relative endurance capacity. Mice performed a graded treadmill test (TSE systems, Bad Hamburg, Germany) at 10 degree incline and an initial speed of 11 m/min for 2 min. This was followed by gradually increasing the velocity every 12<sup>th</sup> min to 14, 16, 18, 20, and 22 m/min, after which the incline was increased by 2 degrees every 12<sup>th</sup> min until exhaustion. Exhaustion was characterized as the point where mice could not be encouraged to run further despite being subjected to gentle electrical shock and stimulation with compressed air.

### Acute exercise procedure

At 3 months of age, mice were housed individually and acclimatized to treadmill running (TSE Systems, Bad Hamburg, Germany) 10 min, 2 times a day for 5 days with 1 day of rest prior to the experimental day.

The respiratory exchange ratio (RER) was determined during running (n = 5–7) on treadmills connected to a Phenomaster unit (TSE Systems, Bad Hamburg, Germany) at 14 m/min with a 10° incline for 120 min.

On the day of the main experiment, mice were prompted to run at 14 m/min with a 10° incline (n = 10) for 10 min, 60 min, or 120 min between 8:00 and 10:30 AM before being euthanized by cervical dislocation. Quadriceps muscles were swiftly removed and snap frozen in liquid nitrogen. Trunk blood was obtained in EDTA containing tubes and plasma was obtained after centrifugation. Both muscle and plasma were stored at -80°C.

### Plasma analyses

Plasma NEFA concentrations were measured colorimetrically using a NEFA-HR (2) kit according to the manufacturer's guidelines (WAKO Diagnostics GmbH, Germany). Plasma IL-6 was measured using a mesoscale v-plex kit according to the manufacturer's guidelines (MSD, Rockville, MD, USA). Plasma glucose and lactate were measured fluorometrically as previously described [36].

### Muscle analyses

**Muscle glucose, lactate, glucose-6 phosphate and glycogen.** Whole quadriceps muscles were crushed in liquid nitrogen to achieve tissue homogeneity. For measurements of muscle glucose, lactate, and glucose-6-phosphate (G-6-P) 10-15mg of crushed muscle tissue was extracted in perchloric acid (PCA) and neutralized to a pH of 7–8.

Muscle glycogen was determined fluorometrically as glycosyl units after hydrolyzing 10–15 mg wet weight muscle samples by boiling for 2h in HCl (1M) as previously described [36].

## HAD and CS activity

The maximal activity of citrate synthase (CS) was measured using a citrate synthase Assay Kit (Sigma-Aldrich) according to manufacturer's guidelines and maximal  $\beta$ -hydroxyacyl-CoA dehydrogenase (HAD) activity was measured as previously described [37].

## Immunoblotting

Crushed muscle samples (25–35g) were homogenized in lysis buffer (10% glycerol, 20 mM Na-pyrophosphate, 150 mM NaCl, 50 mM HEPES, 1% NP-40, 20 mM  $\beta$ -glycerophosphate, 10 mM NaF, 1 mM EDTA, 1 mM EGTA, 20  $\mu$ g/ml aprotinin, 10  $\mu$ g/ml leupeptin, 2 mM  $\text{Na}_3\text{VO}_4$ , 3 mM benzamidine, pH 7.5) using a Tissue Lyser II (Qiagen, Germany). Samples for immunoprecipitation had deacetylase inhibitors (nicotinamide (1mM) and sodium butyrate (5mM)) added to the lysis buffer. Protein content in each of the samples was determined using the bicinchoninic acid method (Thermo Fischer Scientific, USA) and content was adjusted with sample buffer to a concentration of 2 $\mu$ g/ $\mu$ l for STAT3<sup>Tyr705</sup> and 1 $\mu$ g/ $\mu$ l for the remaining proteins. Protein phosphorylation and protein levels were determined by SDS-PAGE using hand casted gels and western blotting. Membranes were incubated in primary antibody for determination of AMPK $\alpha$ 2, PDK4 and PDH-E1 $\alpha$  protein, PDH-E1 $\alpha$ <sup>Ser293</sup>, PDH-E1 $\alpha$ <sup>Ser300</sup>, and PDH-E1 $\alpha$ <sup>Ser295</sup> phosphorylation (all kindly provided by Professor Graham Hardie, University of Dundee, Scotland), P38 protein, P38<sup>Thr180/Tyr182</sup> phosphorylation, Hexokinase (HK) II protein, AMPK<sup>Thr172</sup> phosphorylation, signal transducer and activator of transcription (STAT3) protein, STAT3<sup>Tyr705</sup> phosphorylation (#9212, #4511, #2867, #2535, #9139, #9138, and #9441, respectively, Cell Signaling Technologies, Danvers, MA, USA), acetyl CoA carboxylase (ACC)-<sup>Ser212</sup> phosphorylation and PDH-E1 $\alpha$ <sup>Ser232</sup> phosphorylation (07–303 and #AP1063, respectively, EMD Millipore, Bedford, USA), PDK1 and OXPHOS proteins (ab90444 and ab110413, respectively, Abcam, Cambridge, U.K.), PDK2 protein (ST1643, CalBioChem, Bedford, USA), PDP1 protein (Sigma-Aldrich, St. Louis, USA) and GLUT4 protein (PAI-1065, ABR, Connecticut, USA). Species-specific horseradish peroxidase conjugated immunoglobulin secondary antibodies (DAKO, Denmark) were used for incubation the following day (ACC2 was incubated with streptavidin as primary antibody) and protein bands were subsequently visualized using an ImageQuant LAS 4000 imaging system and quantified with ImageQuant TL 8.1 software (GE Healthcare, Freiburg, Germany).

## Immunoprecipitation for protein acetylation

A total of 100  $\mu$ g of protein from lysate was immunoprecipitated for the determination of PDH acetylation state. Briefly the lysate was added to washed protein G agarose beads (EMD Millipore, Bedford, USA) in a 50:50 solution with PBS buffer containing 10% Triton X with 2 $\mu$ g of PDH-E1 $\alpha$  antibody. The samples were rotated end over end at 4°C overnight and on the subsequent day the beads were washed, sample buffer was added and the samples were shortly heated to 96°C for 3 minutes. The beads were spun down and lysate loaded on a hand-casted gel for SDS-page and western blotting as described above and incubated with total lysine acetylation antibody (#9441, Cell Signaling Technologies, Danvers, MA, USA). Acetylated protein was normalized to the amount of precipitated PDH-E1 $\alpha$  protein content for each sample.

## RNA isolation, reverse transcription, and Real-time PCR

RNA was isolated using a modified guanidium-thiocyanate-chloroform protocol as previously described [38–40]. Reverse transcription was performed on 3 µg of RNA from quadriceps muscle using the Superscript II RNase H<sup>-</sup> system and oligodT (Life Technologies, Nærum, Denmark). To determine mRNA content, real-time PCR was performed using the ABI-7900 Sequence Detection System (Applied biosystems, Foster City, CA, USA). A fragment of cDNA was amplified using the following oligo sequences for IL-6: forward 5' GCTTAATTACACAT GTTCTCTGGGAAA3', reverse 5' CAAGTGCATCGTTGTTTCATAC3' and Taqman probe 5' ATCAGAATTGCCATTGCACAACCTCTTTTCTCAT3', and for SOCS3: forward 5' GCCACCTGGACTCCTATGAGAA3', reverse 5' GAGCATCATACTGATCCAGGAATC3', and Taqman probe 5' TGACCCAGCTGCCTGGAC CCATT3'. Samples were run in triplicates together with a serial dilution made from a pool of aforementioned samples. The serial dilution was used to create a standard curve for quantification of the specific amount of mRNA from obtained sample Ct values. For each sample, the target mRNA content was normalized to β-actin mRNA, which was not affected by either exercise or genotype.

## PDHa activity

PDHa activity (activity of PDH in the active form) was determined after homogenizing 10–15 mg of wet weight muscle tissue and snap-freezing the homogenate in liquid nitrogen as previously described [15,19,41,42] and normalized to creatine content in each muscle sample.

## Statistics

All values are expressed as means ± SE. A two-way ANOVA was used to test the effects of genotype and exercise. When a main effect was detected a Student-Newmann-Keuls test was applied as a post-hoc test to locate differences. For single group data, a student's t-test was used to test if a difference was present. Significance was accepted at  $P < 0.05$  and a tendency for  $0.05 \leq P \leq 0.1$ . Results were analyzed using Sigmaplot 13.0 (Systat, USA).

## Results

### Endurance Test

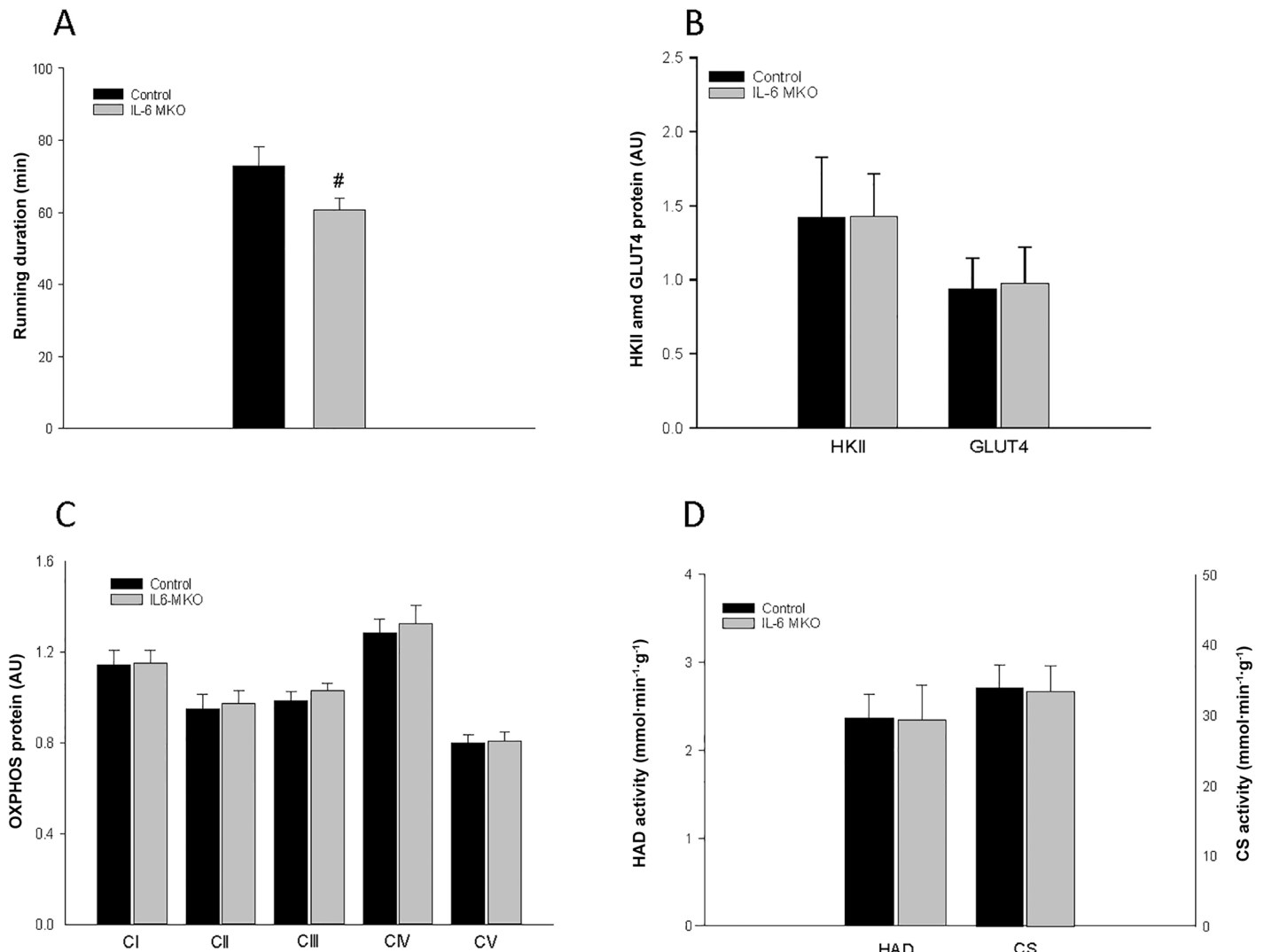
Running duration was shorter ( $P < 0.05$ ) for IL-6 MKO mice than for control mice (Fig 1A).

**HK II, GLUT 4, OXPHOS complexes, HAD and CS activity.** There were no differences in basal protein content of HKII and GLUT4 (Fig 1B) or OXPHOS complexes in skeletal muscle of control and IL-6 MKO mice (Fig 1C). Similarly, there were no genotype differences in basal CS or HAD activity in skeletal muscle (Fig 1D).

### Plasma IL-6

Plasma IL-6 was non-detectable at rest and at 10 min of exercise in both control and IL-6 MKO mice, but increased ( $P < 0.05$ ) in both genotypes after 60 min and 120 min of exercise. IL-6 MKO had higher ( $P < 0.05$ ) plasma IL-6 than control mice after 120 min of exercise (Fig 2A).

**IL-6 and SOCS3 mRNA.** There was an overall difference ( $P < 0.05$ ) in IL-6 mRNA content between control and IL-6 MKO mice with ~300% higher ( $P < 0.05$ ) IL-6 mRNA content in control than IL-6 MKO mice at rest and after 10 min and 60 min of exercise, and ~140% higher ( $P < 0.05$ ) in control than IL-6 MKO mice after 120 min of exercise (Fig 2B). There was no effect of exercise on muscle IL-6 mRNA at 10 min and 60 min of exercise, while IL-6 mRNA content was lower ( $P < 0.05$ ) at 120 min of exercise than rest in control mice. The residual IL-6 mRNA measured in the IL-6 MKO mice is assumed to originate from non-muscle tissue.



**Fig 1. A** Running duration (min) in a graded treadmill endurance test and basal skeletal muscle **B**) HKII and GLUT4 protein content, **C**) OXPPOS complex (I-V) protein content and **D**) HAD and CS activity in skeletal muscle specific IL-6 knockout (IL-6 MKO) and littermate floxed control (Control) mice. Protein levels are given in arbitrary units (AU). Values are given as mean ± SE; n = 6–10 in A and n = 9–10 in B-D. #: significantly different from control, P<0.05;

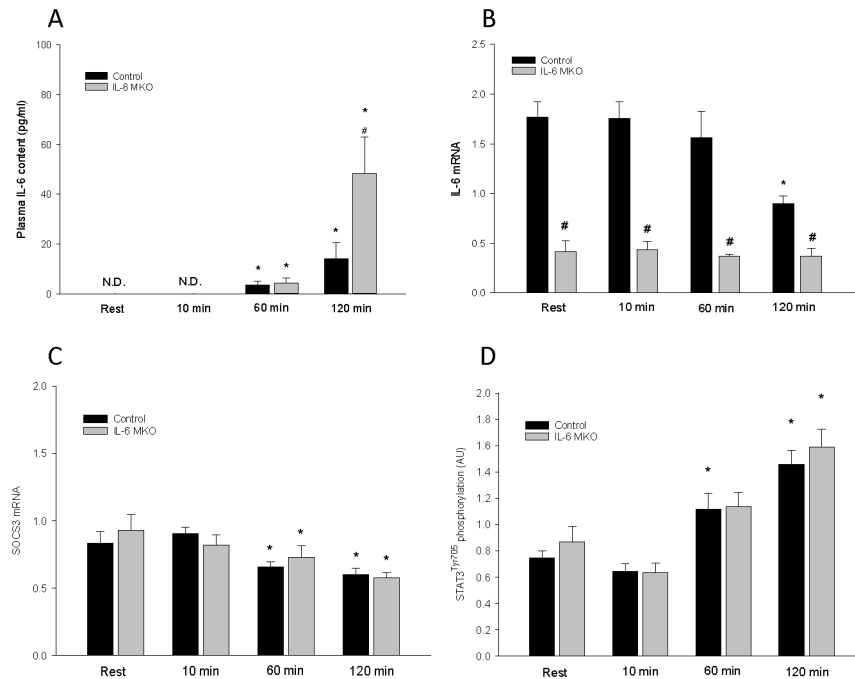
doi:10.1371/journal.pone.0156460.g001

SOCS3 mRNA was lower (P<0.05) at 60 min and 120 min of exercise than at rest in both genotypes with no difference between genotypes at any of the time points (Fig 2C).

**STAT3.** STAT3<sup>Tyr705</sup> phosphorylation in muscle was higher (P<0.05) than at rest after 60 min of exercise in control mice and after 120 min in both genotypes (Fig 2D). There was no difference in STAT3<sup>Tyr705</sup> phosphorylation and STAT3 protein between the genotypes.

**Plasma glucose, NEFA, and lactate.** The plasma glucose concentration was higher (P<0.05) in IL-6 MKO than in control mice at rest. The plasma glucose level was higher (P<0.05) at 10 min and 60 min of exercise than at rest in control mice, whereas plasma glucose was lower (P<0.05) after 120 min of exercise than at rest in IL-6 MKO mice (Table 1). While plasma NEFA concentrations did not change significantly during exercise in control mice, the plasma NEFA level in IL-6 MKO mice was lower (P<0.05) after 10 and 60 min of exercise and higher (P<0.05) after 120 min of exercise than at rest. The plasma NEFA was lower (P<0.05)





**Fig 2.** A) Plasma IL-6 and skeletal muscle B) IL-6 mRNA, C) SOCS3 mRNA and D) STAT3 Tyr705 phosphorylation in skeletal muscle specific IL-6 knockout (IL-6 MKO) and littermate floxed control (Control) mice at rest and after 10, 60 or 120 min of exercise. Protein levels are given in arbitrary units (AU). Values are given as mean  $\pm$  SE; n = 10. \*: significantly different from rest within given genotype,  $P < 0.05$ . #: significantly different from control within given time point,  $P < 0.05$ .

doi:10.1371/journal.pone.0156460.g002

in IL-6 MKO than control mice at 10 min of exercise and tended to be higher ( $0.05 \leq P < 0.1$ ) in IL-6 MKO than control mice at 120 min of exercise (Table 1). The plasma lactate concentration was lower ( $P < 0.05$ ) after 120 min of exercise than at rest in both genotypes. Furthermore, the plasma lactate concentration was lower ( $P < 0.05$ ) in IL-6 MKO than in control mice at rest and after 10 min of exercise (Table 1).

### Muscle glucose, G-6-P, glycogen, lactate and acetyl CoA

Muscle glucose concentration in control mice was higher ( $P < 0.05$ ) after 10 min and tended to be higher ( $0.05 \leq P < 0.1$ ) after 60 min of treadmill exercise than at rest. Furthermore, muscle

**Table 1. Plasma concentrations of glucose, NEFA, and lactate.** Plasma glucose, non-esterified fatty acids (NEFA), and lactate in skeletal muscle specific IL-6 knockout (IL-6 MKO) and littermate floxed controls (Control) mice at rest and after 10, 60 or 120 min of exercise. Values are given as mean  $\pm$  SE; n = 9–10.

	Rest		10 min		60 min		120 min	
	Control	IL6-MKO	Control	IL6-MKO	Control	IL6-MKO	Control	IL6-MKO
Glucose (mmol/L)	7.29 $\pm$ 0.25	8.26 $\pm$ 0.31 <sup>#</sup>	8.45 $\pm$ 0.20 <sup>*</sup>	8.38 $\pm$ 0.42	8.79 $\pm$ 0.35 <sup>*</sup>	8.97 $\pm$ 0.20	7.56 $\pm$ 0.53	6.89 $\pm$ 0.46 <sup>*</sup>
NEFA (mmol/L)	0.86 $\pm$ 0.09	0.76 $\pm$ 0.05	0.75 $\pm$ 0.05	0.57 $\pm$ 0.03 <sup>*,#</sup>	0.68 $\pm$ 0.05	0.65 $\pm$ 0.03 <sup>*</sup>	0.85 $\pm$ 0.04	0.99 $\pm$ 0.03 <sup>*,(#)</sup>
Lactate (mmol/L)	6.76 $\pm$ 0.68	4.64 $\pm$ 0.36 <sup>#</sup>	6.70 $\pm$ 0.70	4.21 $\pm$ 0.29 <sup>#</sup>	5.18 $\pm$ 0.75	4.50 $\pm$ 0.63	4.16 $\pm$ 0.67 <sup>*</sup>	2.44 $\pm$ 0.33 <sup>*</sup>

\*: significantly different from rest within given genotype,  $P < 0.05$ .

<sup>#</sup>: significantly different from control within given time point,  $P < 0.05$ . (\*): Tendency to be significantly different from rest within given genotype,  $0.05 < P < 0.01$ , (#): Tendency to be significantly different from control within given time point,  $P < 0.05$ .

doi:10.1371/journal.pone.0156460.t001



**Table 2. Skeletal muscle glucose, G-6-P, glycogen, lactate, and acetyl CoA content.** Skeletal muscle glucose, glucose -6 phosphate (G-6-P), glycogen, lactate and acetyl CoA in skeletal muscle specific IL-6 knockout (IL-6 MKO) and littermate floxed controls (Control) mice at rest and after 10, 60 or 120 min of exercise. Values are given as mean ± SE; n = 9–10.

	Rest		10 min		60 min		120 min	
	Control	IL6-MKO	Control	IL6-MKO	Control	IL6-MKO	Control	IL6-MKO
Glucose (mmol/kg)	0.41 ±0.04	0.2 ±0.04	0.66 ±0.08*	0.46 ±0.05#	0.62 ±0.08(*)	0.41 ±0.05#	0.38 ±0.03	0.31 ±0.05
G-6-P (mmol/kg)	5.85 ±0.14	5.86 ±0.19	5.64 ±0.21	5.39 ±0.16(*)	5.31 ±0.11(*)	5.14 ±0.14*	5.08 ±0.18*	4.86 ±0.21*
Glycogen (mmol/kg)	16.25 ±1.1	18.41 ±1.49	12.14 ±0.39*	12.35 ±1.14*	7.87 ±0.84*	10.64 ±0.78*	8.60 ±1.17*	6.93 ±0.78*
Lactate (mmol/kg)	3.83 ±0.29	4.37 ±0.54	3.97 ±0.55	3.88 ±0.19	3.46 ±0.51	3.49 ±0.39	2.85 ±0.48*	2.72 ±0.74*
Acetyl CoA (mmol/kg)	0.952±0.06	0.851±0.05	0.821±0.03	0.865±0.04	0.831±0.03	0.860±0.03	0.905±0.03	0.798±0.03

\*: significantly different from rest within given genotype, P<0.05.

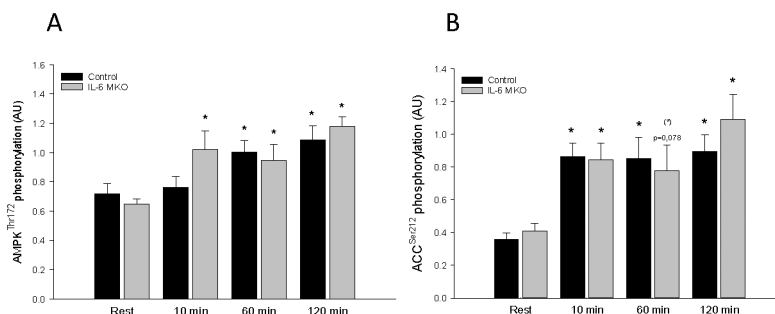
#: significantly different from control within given time point, P<0.05. (\*): Tendency to be significantly different from rest within given genotype, 0.05<P<0.01. (#): Tendency to be significantly different from control within given time point, P<0.05.

doi:10.1371/journal.pone.0156460.t002

glucose was higher (P<0.05) in control than in IL-6 MKO mice at both these time points (Table 2). Muscle G-6-P tended to be lower (0.05≤P<0.1) after 10 and 60 min of exercise than at rest in both genotypes. G-6-P in IL-6 MKO mice was lower (P<0.05) after 60 min than at rest and in both genotypes lower (P<0.05) after 120 minutes of exercise than at rest (Table 2). Muscle glycogen gradually decreased with exercise (P<0.05) and was different from rest at every time point without any significant differences between control and IL-6 mice (Table 2). It may be noted that the difference in muscle glycogen from Rest to 120 min of exercise was 50% less in IL-6 MKO than Control mice, but this difference was not significant. Furthermore, the muscle lactate concentration was lower (P<0.05) after 120 min of exercise than at rest in both genotypes (Table 2). Muscle acetyl CoA was not affected by exercise or genotype.

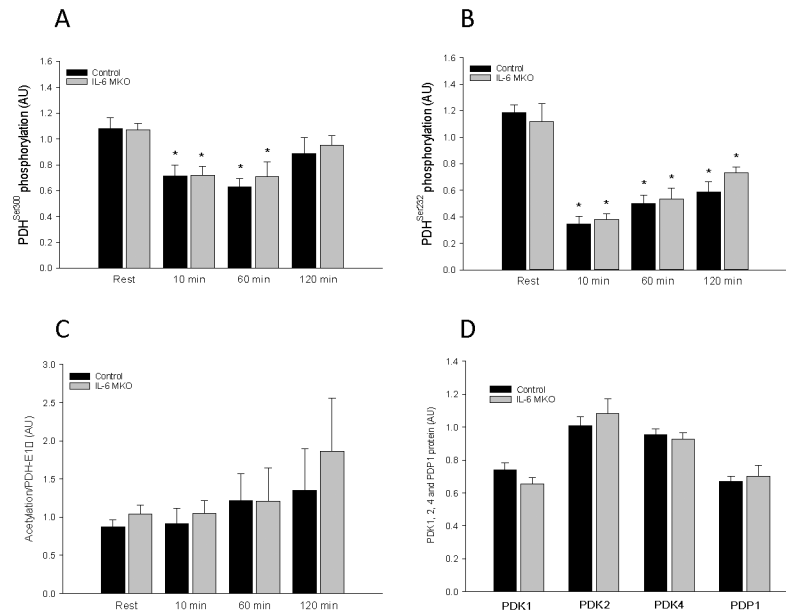
### AMPK and ACC

AMPK<sup>Thr172</sup> phosphorylation in IL-6 MKO mice was higher (P<0.05) after 10, 60, and 120 min of exercise than at rest and in control mice higher (P<0.05) after 60 and 120 min than at rest (Fig 3A). There were no genotype differences in skeletal muscle AMPK<sup>Thr172</sup> phosphorylation and AMPKα2 protein (Fig 3A). ACC<sup>Ser212</sup> phosphorylation after 10, 60, and 120 min of



**Fig 3. A)** AMP-activated protein kinase (AMPK) Thr172 phosphorylation and **B)** Acetyl-CoA carboxylase 2 (ACC2) phosphorylation in skeletal muscle from skeletal muscle specific IL-6 knockout (IL-6 MKO) and littermate floxed controls (Control) mice at rest and after 10, 60 or 120 min of exercise. Values are given as mean ± SE; n = 9–10. Phosphorylation levels are given in arbitrary units (AU). \*: significantly different from rest within given genotype, P<0.05. #: significantly different from control within given time point, P<0.05. (\*): Tendency to be significantly different from rest within given genotype, 0.05<P<0.01.

doi:10.1371/journal.pone.0156460.g003



**Fig 4.** A) PDH Ser300 phosphorylation, B) PDH Ser232 phosphorylation, C) PDH acetylation in skeletal muscle from skeletal muscle specific IL-6 knockout (IL-6 MKO) and littermate floxed controls (Control) at rest and after 10, 60 or 120 min of exercise and D) basal PDK1, PDK2, PDK4 and PDP1. Values are given as mean  $\pm$  SE; n = 10 in A,B and D and n = 5 in C. \*: significantly different from rest within given genotype,  $P < 0.05$ . #: significantly different from control within given time point,  $P < 0.05$ .

doi:10.1371/journal.pone.0156460.g004

exercise was higher ( $P < 0.05$ ), apart from MKO mice having a tendency to be higher ( $0.5 \leq P \leq 0.1$ ) at 60 min ( $P = 0.078$ ), than at rest in both genotypes (Fig 3B). There were no genotype differences in skeletal muscle ACC<sup>Ser212</sup> phosphorylation and ACC2 protein (Fig 3B).

### PDH-E1 $\alpha$ phosphorylation, PDK and PDP protein

While skeletal muscle PDH-E1 $\alpha$ <sup>Ser293</sup> and PDH-E1 $\alpha$ <sup>Ser295</sup> phosphorylation (site 1 and 4) did not change during the 120 min of treadmill exercise, PDH-E1 $\alpha$ <sup>Ser300</sup> and PDH-E1 $\alpha$ <sup>Ser232</sup> phosphorylation (site 2 and 3) was lower ( $P < 0.05$ ) after 10 and 60 min of exercise than at rest in both control and IL-MKO mice (Fig 4A and 4B). There were no differences in skeletal muscle PDK1, PDK2, PDK4 or PDP1 protein content between time points or genotypes (Fig 4D).

### PDH acetylation and SIRT3

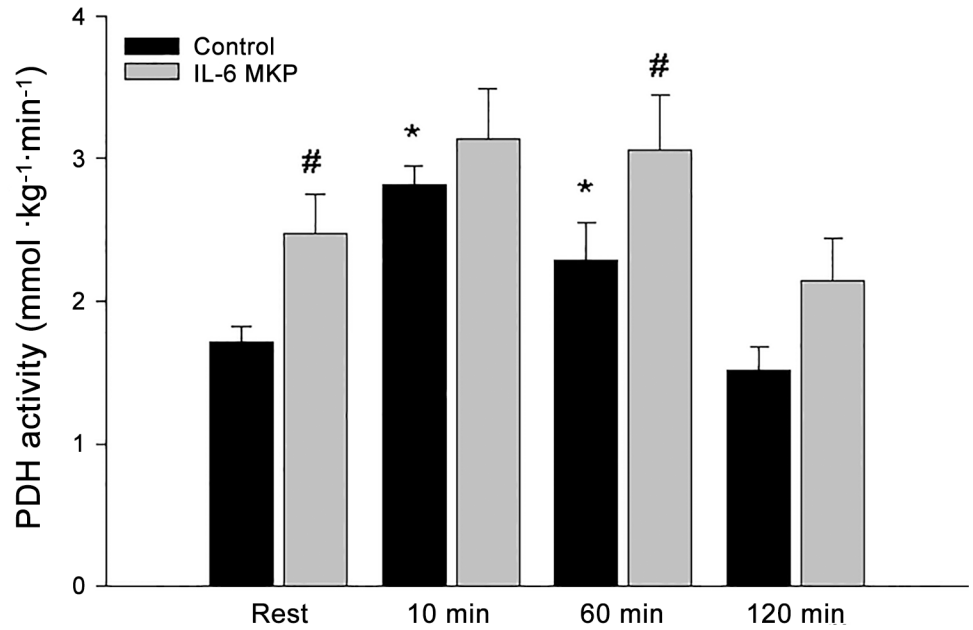
There were no differences in skeletal muscle SIRT3 or PDH-E1 $\alpha$  acetylation (Fig 4C).

### PDHa activity

PDHa activity was higher ( $P < 0.05$ ) after 10 and 60 min of exercise than at rest in control mice, while there was no effect of exercise on PDHa activity in IL-6 MKO mice. The PDHa activity was higher ( $P < 0.05$ ) in IL-6 MKO than control mice at rest and 60 min of exercise (Fig 5). There were no differences in skeletal muscle PDH-E1 $\alpha$  protein.

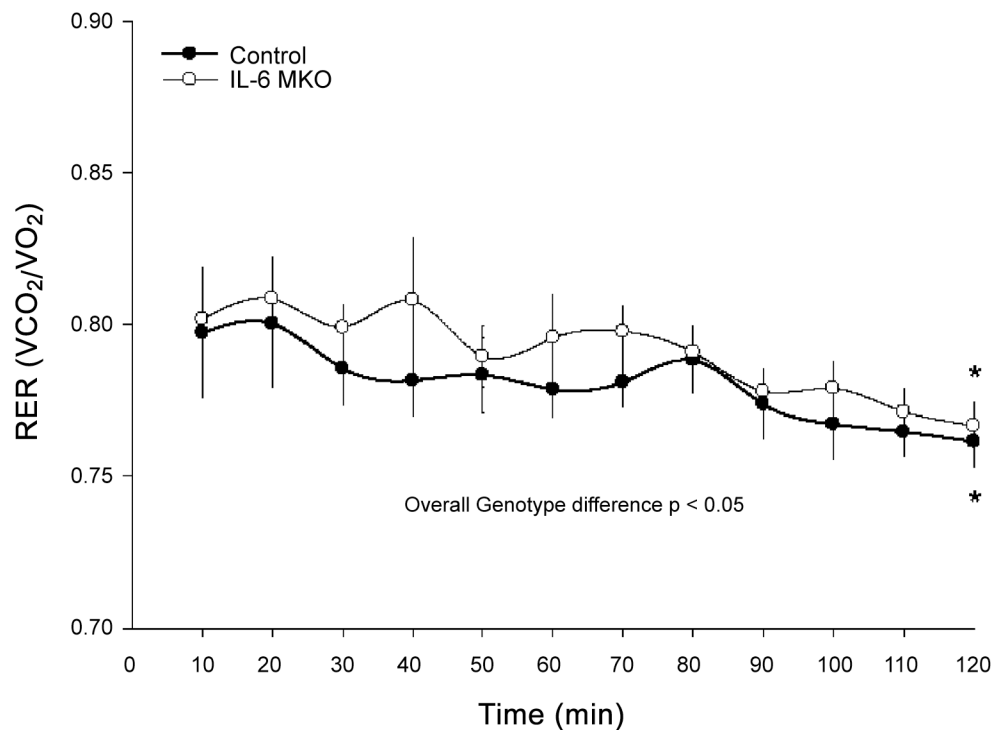
### Indirect calorimetry

RER was lower ( $P < 0.05$ ) after 120 min than after 10 min of exercise in both genotypes. Furthermore, IL-6 MKO mice displayed an overall higher ( $P < 0.05$ ) RER than control mice during the 120 min of treadmill exercise (Fig 6).



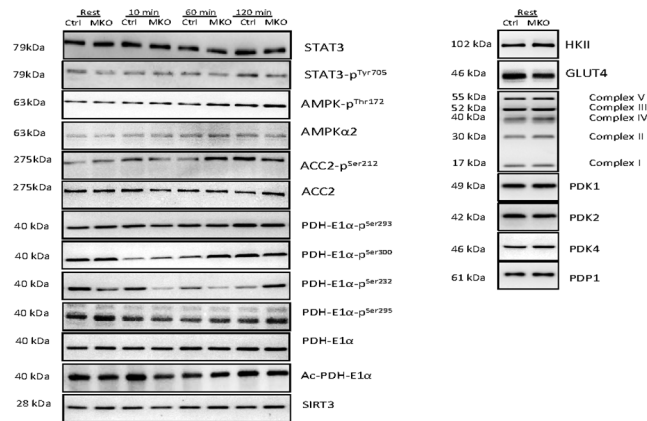
**Fig 5. PDHa activity in skeletal muscle from skeletal muscle specific IL-6 knockout (IL-6 MKO) and littermate floxed controls (Control) at rest and after 10, 60 or 120 min of exercise.** Values are given as mean  $\pm$  SE; n = 10. \*: significantly different from rest within given genotype,  $P < 0.05$ . #: significantly different from control within given time point,  $P < 0.05$ .

doi:10.1371/journal.pone.0156460.g005



**Fig 6. Respiratory Exchange Ratio (RER) in skeletal muscle specific IL-6 knockout (IL-6 MKO) and littermate floxed controls (Control) during 120 min of metabolic treadmill exercise.** Values are given as mean  $\pm$  SE for every 10 minutes of continuous measurements; n = 5–7. \*: significantly different from 10 min within given genotype,  $P < 0.05$ . #: significantly different from control within given time point,  $P < 0.05$ .

doi:10.1371/journal.pone.0156460.g006



**Fig 7. Representative blots of STAT3, STAT3 Tyr705 phosphorylation (phos), AMPK Thr 172 phos, AMPK $\alpha$ 2, ACC2 Ser212 phos, ACC2, PDH Ser293 phos, PDH Ser300 phos, PDH Ser232 phos, PDH Ser295 phos, PDH protein, lysine acetylated pdh-E1 $\alpha$  protein, sirtuin 3 (SIRT3), Hexokinase II (HKII), GLUT4, OXPHOS complexes I-V, PDK1, PDK2, PDK4 and PDP1 protein content.**

doi:10.1371/journal.pone.0156460.g007

## Western blots

For all representative western blots consult [Fig 7](#).

## Discussion

The main findings of the present study are that lack of skeletal muscle IL-6 led to elevated PDHa activity at rest and during exercise without changes in PDHa activity during prolonged exercise as observed in control mice. In addition, IL-6 MKO mice had an overall higher RER during exercise than controls, but maintained the ability to reduce RER during prolonged exercise. Together this indicates that muscle IL-6 influences substrate utilization in skeletal muscle through effects on PDH, but is not required for the shift in substrate use during prolonged exercise.

The observations that the exercise bout in the present study was associated with a gradual decrease in RER and a transient increase in skeletal muscle PDHa activity in control mice as previously reported in humans [7,18,19]), suggest that the experimental setup provides the basis for studying the impact of muscle IL-6 on exercise-induced PDH regulation in skeletal muscle and substrate utilization.

The present findings that IL-6 MKO mice had higher skeletal muscle PDHa activity at rest and after 1h of exercise and did not exhibit a significant change in PDHa activity during exercise show for the first time that lack of skeletal muscle IL-6 affects the regulation of PDH in skeletal muscle. It should be noted that this suggestion is possible although PDHa activity was not significantly different between the genotypes at 2 h of exercise, because the plasma IL-6 levels were increased in both genotypes at 2 h of exercise. Thus, PDHa activity may have been influenced by IL-6 derived from other tissues than skeletal muscle late during exercise. It cannot be excluded that the lack of change in PDHa activity in response to exercise in IL-6 MKO mice is due to PDHa activity being close to full activation already at rest and that a change therefore was not detected during exercise in the present study. However, we have previously observed ~25% higher levels of PDHa activity in mice running at a higher speed and treadmill slope than in the present study (unpublished results). In addition, the observed muscle IL-6 dependent regulation of PDHa activity is in accordance with a previous mouse study showing that a single injection of recombinant IL-6 altered PDHa activity in skeletal

muscle, although the change was dependent on the nutritional state as IL-6 lowered PDHa activity in the fed state and increased PDHa activity in the fasted state [31]. Furthermore, the observed impact of muscle-specific IL-6 knockout on PDHa activity suggests that muscle IL-6 normally exerts an inhibitory effect on skeletal muscle PDH with a concomitant decrease in carbohydrate oxidation. Although differences in PDHa activity do not necessarily relate to flux and may therefore not be linked to the difference in RER between IL-6 MKO and control mice, the observed higher RER in IL-6 MKO mice than controls during the exercise bout does support that IL-6 reduces carbohydrate oxidation. On the other hand, the maintained ability of the IL-6 MKO mice to reduce RER during the exercise bout indicates opposite of the hypothesis that muscle IL-6 is not required for a switch towards fat oxidation during prolonged exercise in mice. However, the increase in circulating IL-6 in IL-6 MKO mice is in accordance with a potential effect of non-muscle-derived IL-6 on substrate utilization and hence RER during prolonged exercise. In addition, the higher PDHa activity in IL-6 MKO than control mice not only during exercise, but also at rest emphasizes that muscle IL-6 may not only function as a contraction-induced myokine, but also regulates basal skeletal muscle metabolism.

To elucidate the mechanistic regulatory pattern behind the different regulation of PDHa activity when muscle IL-6 is lacking, the four known PDH phosphorylation sites, site 1: Ser293; site 2: Ser300; site 3: Ser232, and site 4: Ser295, were examined. The observation that phosphorylation of Both sites 2 and 3 followed an overall inverse pattern of the PDHa activity in control mice with robust decreases in absolute phosphorylation during exercise is in accordance with previous findings for site 1 and 2 in humans [19–21]. Moreover, the similar resting and exercise-induced changes in site 2 and 3 and similar lack of change in site 1 and 4 phosphorylation in IL-6 MKO and control mice indicates that diverse regulation of PDH phosphorylation is not the main underlying mechanism for the observed genotype differences in PDHa activity in the present study. In addition, the lack of difference in PDK1, PDK 2, PDK4 and PDP1 protein during exercise in either genotype suggests that protein content does not account for the observed PDH phosphorylation response. Due to the complex site-specific affinity patterns of the various PDKs [43] measuring the activities of all PDK isoforms may likely be needed to fully understand the exercise-induced regulation of PDH phosphorylation and PDHa activity. As it recently has been reported that the mitochondrial NAD<sup>+</sup> dependent deacetylase, SIRT3, targets the PDH-E1 $\alpha$  subunit in C2C12 cells [22], the acetylation state in skeletal muscle at rest and during exercise might reveal the mechanism explaining the observed changes in PDHa activity with lack of skeletal muscle IL-6. However, the observation that total lysine acetylation of immunoprecipitated PDH-E1 $\alpha$  was similar in IL-6 MKO and control mice does not support that acetylation is regulated by skeletal muscle IL-6, although it cannot be excluded that the total acetylation pattern disguises more subtle differences in acetylation that may be more significant to regulation, but this remains to be determined.

As IL-6 has previously been reported to increase AMPK activity both in human [27] and mouse tissue [31,32] and AMPK has been suggested to regulate PDH [33,44], it was hypothesized that AMPK mediates the effects of IL-6 on PDHa activity and substrate utilization. However, the similar exercise-induced AMPK phosphorylation in IL-6 MKO and control mice does not support IL-6 mediated regulation of AMPK as previously reported, although it might be speculated that IL-6-induced regulation of AMPK is overshadowed by stronger effectors in an acute exercise setting.

The finding that plasma glucose at rest was higher in the IL-6 MKO than control mice and the plasma glucose did not drop significantly until the latter stages of the exercise bout might reflect lower glucose removal by skeletal muscle in IL-6 MKO mice or be due to higher hepatic glucose output in IL-6 MKO than in control mice. Furthermore, the observation that basal

hexokinase and GLUT4 protein content as well as G-6-P concentrations in skeletal muscle were similar in the two genotypes, while muscle glucose was lower in the IL-6 MKO than control mice may advocate more for a higher glycolytic flux and carbohydrate utilization in mice lacking skeletal muscle IL-6 rather than a lower glucose uptake. In addition, the genotype difference in running endurance during an incremental exercise running test may suggest that the IL-MKO mice were running at a higher relative intensity than the control mice in the current exercise study. However, the IL-6 MKO mice did not require more motivation than the controls during the 2 hour moderate intensity exercise protocol and completed the protocol as the controls in the present study. Furthermore, as a previous human study has reported intensity dependent AMPK regulation [45], the similar exercise-induced AMPK and ACC phosphorylation in the two genotypes in the present study suggests that the relative exercise intensity was equal in the IL-6 MKO and control mice during the exercise bout, which is further supported by the identical decrease in muscle glycogen in the two genotypes during exercise.

The observation that the plasma IL-6 concentrations were significantly elevated after 2 hours of running in control mice is in accordance with previous murine studies [46,47]. The finding that plasma IL-6 concentrations in the control mice reached rather modest levels of ~15 pg/ml points towards the possibility that the loxP inserts in the floxed control mice might affect expression or release of IL-6. Hence, other studies with various treadmill protocols have reported increases in circulating plasma IL-6 to levels between 40–70 pg/ml [30,48]. The observation that skeletal muscle IL-6 mRNA did not increase with the 2 hours of treadmill exercise and even decreased at the end of the exercise bout, opposes previous findings [49], and suggests that exercise did not induce IL-6 transcription in skeletal muscle of the floxed IL-6 mice. It cannot be excluded that exercise may have increased IL-6 mRNA in other muscles than the investigated quadriceps, but regardless, the skeletal muscle IL-6 mRNA data show that IL-6 was knocked out, which was also confirmed at the level of DNA (S1 Fig). Therefore, the exercise-induced increase in circulating IL-6 levels in the IL-6 MKO mice cannot be originating from skeletal muscle fibers and based on previous findings [50] suggests that IL-6 derived from adipose tissue may be responsible for the increase in plasma IL-6 during exercise in the present experiment. This may indicate that the observed skeletal muscle IL-6 dependent effects on skeletal muscle PDHa activity are mediated by autocrine/paracrine effects of IL-6. However, the identical exercise-induced STAT3 phosphorylation and identical decline in SOCS3 mRNA in the two genotypes suggest that signaling pathways traditionally accredited to be induced by IL-6 were affected similarly by exercise in the two genotypes. Thus, the observed metabolic differences must be exerted through other pathways. In addition, a variety of other cytokines and hormones have been reported to trigger the STAT3 signaling pathway [51,52] and any of these, or non-muscle derived IL-6 may be responsible for the observed STAT3 pathway inductions and explain why this response was also present in IL-6 MKO mice.

The current observation that IL-6 MKO mice displayed a lower exercise capacity than the control mice when submitted to an incremental endurance exercise test is consistent with some [53], but not all previous observations in IL-6 whole body knockout mice [30,54]. The findings that skeletal muscle CS and HAD activities as well as the content of OXPHOS proteins were similar in the two genotypes indicate that skeletal muscle oxidative capacity was unaffected by the lack of skeletal muscle IL-6. Together with the observed higher RER value during exercise in IL-6 MKO mice than controls in the present study this may suggest that the reduced exercise endurance in the IL-6 MKO mice is due to increased carbohydrate/reduced fat utilization relative to controls rather than reduced skeletal muscle oxidative capacity.

In conclusion, the present findings show, for the first time, that lack of skeletal muscle IL-6 leads to elevated PDHa activity in skeletal muscle both at rest and during exercise, and



prevented significant changes in PDHa activity during prolonged exercise. Differences in PDH phosphorylation did not seem to explain these genotype differences in PDHa activity and the mechanisms behind are still elusive. In addition, lack of skeletal muscle IL-6 resulted in higher RER during prolonged exercise suggesting that IL-6 normally reduce carbohydrate oxidation during exercise via effects on skeletal muscle PDH.

## Supporting Information

**S1 Fig. Representative PCR gel of products generated with primers surrounding exon 2 of the IL-6 gene in quadriceps muscle from floxed and IL-6 skeletal muscle-specific knockout mice.** A reduction in band size from 1,000 bp to 260 bp in is equal to the loss of exon 2 of the IL-6 gene. WT Ctrl: Wild-type control, Flox Ctrl: Floxed control, MKO Control: Skeletal muscle-specific knockout Control.

(TIF)

## Author Contributions

Conceived and designed the experiments: AG JGK HP. Performed the experiments: AG CS LB EJ JGK HP. Analyzed the data: AG CS LB EJ JGK. Contributed reagents/materials/analysis tools: HP. Wrote the paper: AG CS LB EJ JGK HP.

## References

1. Coyle EF, Jeukendrup AE, Wagenmakers AJ, Saris WH (1997) Fatty acid oxidation is directly regulated by carbohydrate metabolism during exercise. *Am J Physiol* 273: E268–E275. PMID: [9277379](#)
2. Romijn JA, Coyle EF, Sidossis LS, Gastaldelli A, Horowitz JF, Endert E, et al (1993) Regulation of endogenous fat and carbohydrate metabolism in relation to exercise intensity and duration. *Am J Physiol* 265: E380–E391. PMID: [8214047](#)
3. Randle PJ, Garland PB, Hales CN, Newsholme EA (1963) The glucose fatty-acid cycle. Its role in insulin sensitivity and the metabolic disturbances of diabetes mellitus. *Lancet* 1: 785–789. PMID: [13990765](#)
4. van Loon LJ, Greenhaff PL, Constantin-Teodosiu D, Saris WH, Wagenmakers AJ (2001) The effects of increasing exercise intensity on muscle fuel utilisation in humans. *J Physiol* 536: 295–304. PHY\_12382 [pii]. PMID: [11579177](#)
5. Wojtaszewski JF, MacDonald C, Nielsen JN, Hellsten Y, Hardie DG, Kemp BE, et al (2003) Regulation of 5'AMP-activated protein kinase activity and substrate utilization in exercising human skeletal muscle. *Am J Physiol Endocrinol Metab* 284: E813–E822. doi: [10.1152/ajpendo.00436.2002](#);00436.2002 [pii]. PMID: [12488245](#)
6. Hermansen L, Hultman E, Saltin B (1967) Muscle glycogen during prolonged severe exercise. *Acta Physiol Scand* 71: 129–139. doi: [10.1111/j.1748-1716.1967.tb03719.x](#) PMID: [5584522](#)
7. Watt MJ, Heigenhauser GJ, Dyck DJ, Spriet LL (2002) Intramuscular triacylglycerol, glycogen and acetyl group metabolism during 4 h of moderate exercise in man. *J Physiol* 541: 969–978. PHY\_18820 [pii]. PMID: [12068055](#)
8. Harris RA, Bowker-Kinley MM, Huang B, Wu P (2002) Regulation of the activity of the pyruvate dehydrogenase complex. *Adv Enzyme Regul* 42: 249–259. S0065-2571(01)00061-9 [pii]. PMID: [12123719](#)
9. Sugden MC, Holness MJ (2006) Mechanisms underlying regulation of the expression and activities of the mammalian pyruvate dehydrogenase kinases. *Arch Physiol Biochem* 112: 139–149. T6152666M0301757 [pii]; doi: [10.1080/13813450600935263](#) PMID: [17132539](#)
10. Korotchkina LG, Patel MS (2001) Probing the mechanism of inactivation of human pyruvate dehydrogenase by phosphorylation of three sites. *J Biol Chem* 276: 5731–5738. doi: [10.1074/jbc.M007558200](#); M007558200 [pii]. PMID: [11092882](#)
11. Roche TE, Baker JC, Yan X, Hiromasa Y, Gong X, Peng T, et al (2001) Distinct regulatory properties of pyruvate dehydrogenase kinase and phosphatase isoforms. *Prog Nucleic Acid Res Mol Biol* 70: 33–75. PMID: [11642366](#)



12. Watt MJ, Heigenhauser GJ, LeBlanc PJ, Inglis JG, Spriet LL, Peters SJ (2004) Rapid upregulation of pyruvate dehydrogenase kinase activity in human skeletal muscle during prolonged exercise. *J Appl Physiol* (1985) 97: 1261–1267. doi: [10.1152/jappphysiol.00132.2004](https://doi.org/10.1152/jappphysiol.00132.2004);00132.2004 [pii].
13. Harris RA, Huang B, Wu P (2001) Control of pyruvate dehydrogenase kinase gene expression. *Adv Enzyme Regul* 41: 269–288. S006525710000200 [pii]. PMID: [11384751](https://pubmed.ncbi.nlm.nih.gov/11384751/)
14. Patel MS, Korotchkina LG (2001) Regulation of mammalian pyruvate dehydrogenase complex by phosphorylation: complexity of multiple phosphorylation sites and kinases. *Exp Mol Med* 33: 191–197. doi: [10.1038/emm.2001.32](https://doi.org/10.1038/emm.2001.32) PMID: [11795479](https://pubmed.ncbi.nlm.nih.gov/11795479/)
15. Putman CT, Spriet LL, Hultman E, Lindinger MI, Lands LC, McKelvie RS, et al (1993) Pyruvate dehydrogenase activity and acetyl group accumulation during exercise after different diets. *Am J Physiol* 265: E752–E760. PMID: [8238502](https://pubmed.ncbi.nlm.nih.gov/8238502/)
16. Romijn JA, Coyle EF, Sidossis LS, Gastaldelli A, Horowitz JF, Endert E, et al (1993) Regulation of endogenous fat and carbohydrate metabolism in relation to exercise intensity and duration. *Am J Physiol* 265: E380–E391. PMID: [8214047](https://pubmed.ncbi.nlm.nih.gov/8214047/)
17. Ward GR, Sutton JR, Jones NL, Toews CJ (1982) Activation by exercise of human skeletal muscle pyruvate dehydrogenase in vivo. *Clin Sci (Lond)* 63: 87–92.
18. Mourtzakis M, Saltin B, Graham T, Pilegaard H (2006) Carbohydrate metabolism during prolonged exercise and recovery: interactions between pyruvate dehydrogenase, fatty acids, and amino acids. *J Appl Physiol* (1985) 100: 1822–1830. 00571.2005 [pii]; doi: [10.1152/jappphysiol.00571.2005](https://doi.org/10.1152/jappphysiol.00571.2005)
19. Pilegaard H, Birk JB, Sacchetti M, Mourtzakis M, Hardie DG, Stewart G, et al (2006) PDH-E1alpha dephosphorylation and activation in human skeletal muscle during exercise: effect of intralipid infusion. *Diabetes* 55: 3020–3027. 55/11/3020 [pii]; doi: [10.2337/db06-0152](https://doi.org/10.2337/db06-0152) PMID: [17065338](https://pubmed.ncbi.nlm.nih.gov/17065338/)
20. Kiilerich K, Birk JB, Damsgaard R, Wojtaszewski JF, Pilegaard H (2008) Regulation of PDH in human arm and leg muscles at rest and during intense exercise. *Am J Physiol Endocrinol Metab* 294: E36–E42. 00352.2007 [pii]; doi: [10.1152/ajpendo.00352.2007](https://doi.org/10.1152/ajpendo.00352.2007) PMID: [17957032](https://pubmed.ncbi.nlm.nih.gov/17957032/)
21. Kiilerich K, Gudmundsson M, Birk JB, Lundby C, Taudorf S, Plomgaard P, et al (2010) Low muscle glycogen and elevated plasma free fatty acid modify but do not prevent exercise-induced PDH activation in human skeletal muscle. *Diabetes* 59: 26–32. db09-1032 [pii]; doi: [10.2337/db09-1032](https://doi.org/10.2337/db09-1032) PMID: [19833896](https://pubmed.ncbi.nlm.nih.gov/19833896/)
22. Jing E, O'Neill BT, Rardin MJ, Kleinridders A, Ilkeyeva OR, Ussar S, et al (2013) Sirt3 regulates metabolic flexibility of skeletal muscle through reversible enzymatic deacetylation. *Diabetes* 62: 3404–3417. db12-1650 [pii]; doi: [10.2337/db12-1650](https://doi.org/10.2337/db12-1650) PMID: [23835326](https://pubmed.ncbi.nlm.nih.gov/23835326/)
23. Ozden O, Park SH, Wagner BA, Yong SH, Zhu Y, Vassilopoulos A, et al (2014) SIRT3 deacetylates and increases pyruvate dehydrogenase activity in cancer cells. *Free Radic Biol Med* 76: 163–172. S0891-5849(14)00373-6 [pii]; doi: [10.1016/j.freeradbiomed.2014.08.001](https://doi.org/10.1016/j.freeradbiomed.2014.08.001) PMID: [25152236](https://pubmed.ncbi.nlm.nih.gov/25152236/)
24. Lauritzen HP, Brandauer J, Schjerling P, Koh HJ, Treebak JT, Hirshman MF, et al (2013) Contraction and AICAR stimulate IL-6 vesicle depletion from skeletal muscle fibers in vivo. *Diabetes* 62: 3081–3092. db12-1261 [pii]; doi: [10.2337/db12-1261](https://doi.org/10.2337/db12-1261) PMID: [23761105](https://pubmed.ncbi.nlm.nih.gov/23761105/)
25. Steensberg A, van HG, Osada T, Sacchetti M, Saltin B, Klarlund PB (2000) Production of interleukin-6 in contracting human skeletal muscles can account for the exercise-induced increase in plasma interleukin-6. *J Physiol* 529 Pt 1: 237–242. PHY\_11483 [pii]. PMID: [11080265](https://pubmed.ncbi.nlm.nih.gov/11080265/)
26. Wolsk E, Mygind H, Grondahl TS, Pedersen BK, van HG (2010) IL-6 selectively stimulates fat metabolism in human skeletal muscle. *Am J Physiol Endocrinol Metab* 299: E832–E840. ajpendo.00328.2010 [pii]; doi: [10.1152/ajpendo.00328.2010](https://doi.org/10.1152/ajpendo.00328.2010) PMID: [20823453](https://pubmed.ncbi.nlm.nih.gov/20823453/)
27. Carey AL, Steinberg GR, Macaulay SL, Thomas WG, Holmes AG, Ramm G, et al (2006) Interleukin-6 increases insulin-stimulated glucose disposal in humans and glucose uptake and fatty acid oxidation in vitro via AMP-activated protein kinase. *Diabetes* 55: 2688–2697. 55/10/2688 [pii]; doi: [10.2337/db05-1404](https://doi.org/10.2337/db05-1404) PMID: [17003332](https://pubmed.ncbi.nlm.nih.gov/17003332/)
28. Helge JW, Stallknecht B, Pedersen BK, Galbo H, Kiens B, Richter EA (2003) The effect of graded exercise on IL-6 release and glucose uptake in human skeletal muscle. *J Physiol* 546: 299–305. PHY\_030437 [pii]. PMID: [12509497](https://pubmed.ncbi.nlm.nih.gov/12509497/)
29. Helge JW, Klein DK, Andersen TM, van HG, Calbet J, Boushel R, et al (2011) Interleukin-6 release is higher across arm than leg muscles during whole-body exercise. *Exp Physiol* 96: 590–598. expphysiol.2010.056424 [pii]; doi: [10.1113/expphysiol.2010.056424](https://doi.org/10.1113/expphysiol.2010.056424) PMID: [21421702](https://pubmed.ncbi.nlm.nih.gov/21421702/)
30. O'Neill HM, Palanivel R, Wright DC, MacDonald T, Lally JS, Schertzer JD, et al (2013) IL-6 is not essential for exercise-induced increases in glucose uptake. *J Appl Physiol* (1985) 114: 1151–1157. jappphysiol.00946.2012 [pii]; doi: [10.1152/jappphysiol.00946.2012](https://doi.org/10.1152/jappphysiol.00946.2012)

31. Bienso RS, Knudsen JG, Brandt N, Pedersen PA, Pilegaard H (2014) Effects of IL-6 on pyruvate dehydrogenase regulation in mouse skeletal muscle. *Pflugers Arch* 466: 1647–1657. doi: [10.1007/s00424-013-1399-5](https://doi.org/10.1007/s00424-013-1399-5) PMID: [24221357](https://pubmed.ncbi.nlm.nih.gov/24221357/)
32. Kelly M, Keller C, Avilucea PR, Keller P, Luo Z, Xiang X, et al (2004) AMPK activity is diminished in tissues of IL-6 knockout mice: the effect of exercise. *Biochem Biophys Res Commun* 320: 449–454. doi: [10.1016/j.bbrc.2004.05.188](https://doi.org/10.1016/j.bbrc.2004.05.188);S0006291X04012161 [pii]. PMID: [15219849](https://pubmed.ncbi.nlm.nih.gov/15219849/)
33. Klein DK, Pilegaard H, Treebak JT, Jensen TE, Viollet B, Schjerling P, et al (2007) Lack of AMPKalpha2 enhances pyruvate dehydrogenase activity during exercise. *Am J Physiol Endocrinol Metab* 293: E1242–E1249. 00382.2007 [pii]; doi: [10.1152/ajpendo.00382.2007](https://doi.org/10.1152/ajpendo.00382.2007) PMID: [17711995](https://pubmed.ncbi.nlm.nih.gov/17711995/)
34. Quintana A, Erta M, Ferrer B, Comes G, Giralt M, Hidalgo J (2013) Astrocyte-specific deficiency of interleukin-6 and its receptor reveal specific roles in survival, body weight and behavior. *Brain Behav Immun* 27: 162–173. S0889-1591(12)00473-4 [pii]; doi: [10.1016/j.bbi.2012.10.011](https://doi.org/10.1016/j.bbi.2012.10.011) PMID: [23085146](https://pubmed.ncbi.nlm.nih.gov/23085146/)
35. Knudsen JG, Bertholdt L, Joensen E, Lassen SB, Hidalgo J, Pilegaard H (2015) Skeletal muscle interleukin-6 regulates metabolic factors in iWAT during HFD and exercise training. *Obesity (Silver Spring)* 23: 1616–1624. doi: [10.1002/oby.21139](https://doi.org/10.1002/oby.21139)
36. Lowry OH, Passonneau JV (1972) A flexible system of enzymatic analysis.
37. Lowry CV, Kimmey JS, Felder S, Chi MM, Kaiser KK, Passonneau PN, et al (1978) Enzyme patterns in single human muscle fibers. *J Biol Chem* 253: 8269–8277. PMID: [152314](https://pubmed.ncbi.nlm.nih.gov/152314/)
38. Chomczynski P, Sacchi N (1987) Single-step method of RNA isolation by acid guanidinium thiocyanate-phenol-chloroform extraction. *Anal Biochem* 162: 156–159. PMID: [2440339](https://pubmed.ncbi.nlm.nih.gov/2440339/)
39. Puissant C, Houdebine LM (1990) An improvement of the single-step method of RNA isolation by acid guanidinium thiocyanate-phenol-chloroform extraction. *Biotechniques* 8: 148–149. PMID: [1690559](https://pubmed.ncbi.nlm.nih.gov/1690559/)
40. Pilegaard H, Ordway GA, Saltin B, Neuffer PD (2000) Transcriptional regulation of gene expression in human skeletal muscle during recovery from exercise. *Am J Physiol Endocrinol Metab* 279: E806–E814. PMID: [11001762](https://pubmed.ncbi.nlm.nih.gov/11001762/)
41. Cederblad G, Carlin JI, Constantin-Teodosiu D, Harper P, Hultman E (1990) Radioisotopic assays of CoASH and carnitine and their acetylated forms in human skeletal muscle. *Anal Biochem* 185: 274–278. PMID: [2339783](https://pubmed.ncbi.nlm.nih.gov/2339783/)
42. Constantin-Teodosiu D, Cederblad G, Hultman E (1991) A sensitive radioisotopic assay of pyruvate dehydrogenase complex in human muscle tissue. *Anal Biochem* 198: 347–351. PMID: [1799221](https://pubmed.ncbi.nlm.nih.gov/1799221/)
43. Korotchkina LG, Patel MS (2001) Site specificity of four pyruvate dehydrogenase kinase isoenzymes toward the three phosphorylation sites of human pyruvate dehydrogenase. *J Biol Chem* 276: 37223–37229. doi: [10.1074/jbc.M103069200](https://doi.org/10.1074/jbc.M103069200);M103069200 [pii]. PMID: [11486000](https://pubmed.ncbi.nlm.nih.gov/11486000/)
44. Smith AC, Bruce CR, Dyck DJ (2005) AMP kinase activation with AICAR simultaneously increases fatty acid and glucose oxidation in resting rat soleus muscle. *J Physiol* 565: 537–546. jphysiol.2004.081679 [pii]; doi: [10.1113/jphysiol.2004.081679](https://doi.org/10.1113/jphysiol.2004.081679) PMID: [15774530](https://pubmed.ncbi.nlm.nih.gov/15774530/)
45. Wojtaszewski JF, Nielsen P, Hansen BF, Richter EA, Kiens B (2000) Isoform-specific and exercise intensity-dependent activation of 5'-AMP-activated protein kinase in human skeletal muscle. *J Physiol* 528 Pt 1: 221–226. PHY\_1384 [pii]. PMID: [11018120](https://pubmed.ncbi.nlm.nih.gov/11018120/)
46. Colbert LH, Davis JM, Essig DA, Ghaffar A, Mayer EP (2001) Tissue expression and plasma concentrations of TNFalpha, IL-1beta, and IL-6 following treadmill exercise in mice. *Int J Sports Med* 22: 261–267. doi: [10.1055/s-2001-13818](https://doi.org/10.1055/s-2001-13818) PMID: [11414667](https://pubmed.ncbi.nlm.nih.gov/11414667/)
47. Fritsche L, Hoene M, Lehmann R, Ellingsgaard H, Hennige AM, Pohl AK, et al (2010) IL-6 deficiency in mice neither impairs induction of metabolic genes in the liver nor affects blood glucose levels during fasting and moderately intense exercise. *Diabetologia* 53: 1732–1742. doi: [10.1007/s00125-010-1754-4](https://doi.org/10.1007/s00125-010-1754-4) PMID: [20411234](https://pubmed.ncbi.nlm.nih.gov/20411234/)
48. Castellani L, Perry CG, Macpherson RE, Root-McCaig J, Huber JS, Arkell AM, et al (2015) Exercise-mediated IL-6 signaling occurs independent of inflammation and is amplified by training in mouse adipose tissue. *J Appl Physiol* (1985) 119: 1347–1354. japplphysiol.00551.2015 [pii]; doi: [10.1152/japplphysiol.00551.2015](https://doi.org/10.1152/japplphysiol.00551.2015)
49. Adser H, Wojtaszewski JF, Jakobsen AH, Kiilerich K, Hidalgo J, Pilegaard H (2011) Interleukin-6 modifies mRNA expression in mouse skeletal muscle. *Acta Physiol (Oxf)* 202: 165–173. doi: [10.1111/j.1748-1716.2011.02269.x](https://doi.org/10.1111/j.1748-1716.2011.02269.x)
50. Reilly SM, Ahmadian M, Zamarron BF, Chang L, Uhm M, Poirier B, et al (2015) A subcutaneous adipose tissue-liver signalling axis controls hepatic gluconeogenesis. *Nat Commun* 6: 6047. ncomms7047 [pii]; doi: [10.1038/ncomms7047](https://doi.org/10.1038/ncomms7047) PMID: [25581158](https://pubmed.ncbi.nlm.nih.gov/25581158/)
51. Abroun S, Saki N, Ahmadvand M, Asghari F, Salari F, Rahim F (2015) STATs: An Old Story, Yet Mesmerizing. *Cell J* 17: 395–411. PMID: [26464811](https://pubmed.ncbi.nlm.nih.gov/26464811/)

52. Kaminski KA, Dziemidowicz M, Litvinovich S, Bonda T, Ptaszynska K, Kozuch M, et al (2012) Interleukin 6 is not necessary for STAT3 phosphorylation and myocardial hypertrophy following short term beta-adrenergic stimulation. *Adv Med Sci* 57: 94–99. S1896-1126(14)60115-2 [pii]; doi: [10.2478/v10039-011-0059-2](https://doi.org/10.2478/v10039-011-0059-2) PMID: [22328203](https://pubmed.ncbi.nlm.nih.gov/22328203/)
53. Faldt J, Wernstedt I, Fitzgerald SM, Wallenius K, Bergstrom G, Jansson JO (2004) Reduced exercise endurance in interleukin-6-deficient mice. *Endocrinology* 145: 2680–2686. doi: [10.1210/en.2003-1319](https://doi.org/10.1210/en.2003-1319); en.2003-1319 [pii]. PMID: [14988384](https://pubmed.ncbi.nlm.nih.gov/14988384/)
54. Benrick A, Wallenius V, Asterholm IW (2012) Interleukin-6 mediates exercise-induced increase in insulin sensitivity in mice. *Exp Physiol* 97: 1224–1235. *expphysiol.2012.065508* [pii]; doi: [10.1113/expphysiol.2012.065508](https://doi.org/10.1113/expphysiol.2012.065508) PMID: [22523382](https://pubmed.ncbi.nlm.nih.gov/22523382/)