



Time-of-Flight Three Dimensional Neutron Diffraction in Transmission Mode for Mapping Crystal Grain Structures

Cereser, Alberto; Strobl, Markus; Hall, Stephen A.; Steuwer, Axel; Kiyanagi, Ryoji; Tremsin, Anton S.; Knudsen, Erik B.; Shinohara, Takenao; Willendrup, Peter K.; Fanta, Alice Bastos da Silva; Iyengar, Srinivasan; Larsen, Peter M.; Hanashima, Takayasu; Moyoshi, Taketo; Kadletz, Peter M.; Krooss, Philipp; Niendorf, Thomas; Sales, Morten; Schmahl, Wolfgang W.; Schmidt, Søren

Published in:
Scientific Reports

DOI:
[10.1038/s41598-017-09717-w](https://doi.org/10.1038/s41598-017-09717-w)

Publication date:
2017

Document Version
Publisher's PDF, also known as Version of record

Citation for published version (APA):
Cereser, A., Strobl, M., Hall, S. A., Steuwer, A., Kiyanagi, R., Tremsin, A. S., ... Schmidt, S. (2017). Time-of-Flight Three Dimensional Neutron Diffraction in Transmission Mode for Mapping Crystal Grain Structures. DOI: 10.1038/s41598-017-09717-w

SCIENTIFIC REPORTS

OPEN

Time-of-Flight Three Dimensional Neutron Diffraction in Transmission Mode for Mapping Crystal Grain Structures

Alberto Cereser^{1,2}, Markus Strobl^{2,3}, Stephen A. Hall^{2,4}, Axel Steuwer^{5,6}, Ryoji Kiyanagi⁷, Anton S. Tremsin⁸, Erik B. Knudsen¹, Takenao Shinohara⁷, Peter K. Willendrup¹, Alice Bastos da Silva Fanta⁹, Srinivasan Iyengar^{2,10}, Peter M. Larsen¹, Takayasu Hanashima¹¹, Taketo Moyoshi¹¹, Peter M. Kadletz¹², Philipp Krooß¹³, Thomas Niendorf¹³, Morten Sales¹, Wolfgang W. Schmahl¹² & Søren Schmidt¹

The physical properties of polycrystalline materials depend on their microstructure, which is the nano- to centimeter scale arrangement of phases and defects in their interior. Such microstructure depends on the shape, crystallographic phase and orientation, and interfacing of the grains constituting the material. This article presents a new non-destructive 3D technique to study centimeter-sized bulk samples with a spatial resolution of hundred micrometers: time-of-flight three-dimensional neutron diffraction (ToF 3DND). Compared to existing analogous X-ray diffraction techniques, ToF 3DND enables studies of samples that can be both larger in size and made of heavier elements. Moreover, ToF 3DND facilitates the use of complicated sample environments. The basic ToF 3DND setup, utilizing an imaging detector with high spatial and temporal resolution, can easily be implemented at a time-of-flight neutron beamline. The technique was developed and tested with data collected at the Materials and Life Science Experimental Facility of the Japan Proton Accelerator Complex (J-PARC) for an iron sample. We successfully reconstructed the shape of 108 grains and developed an indexing procedure. The reconstruction algorithms have been validated by reconstructing two stacked Co-Ni-Ga single crystals, and by comparison with a grain map obtained by post-mortem electron backscatter diffraction (EBSD).

Polycrystalline materials, abundant in nature and among man-made objects, are aggregates of grains joined by a network of internal interfaces. The macroscopic properties of these materials are mostly defined by their microstructure and by micro-structural processes. Consequently, to understand the behavior of such a material, it is crucial to probe its internal structures, which range over a number of length scales¹.

Standard tools in metallography, such as optical and electron microscopy, return information limited to the microstructure of a sample surface, which may not be representative of the bulk material^{2,3}. These techniques require extensive sample preparation and can return 3D sample reconstructions only by repeatedly removing a layer of material and characterizing the surface beneath^{4,5}. Such processes are destructive and cannot be applied *in situ*, e.g. to map structural changes during loading.

¹NEXMAP, Department of Physics, Technical University of Denmark, Kgs. Lyngby, 2800, Denmark. ²European Spallation Source ESS AB, Lund, 22592, Sweden. ³Niels Bohr Institute, University of Copenhagen, Copenhagen, 2100, Denmark. ⁴Division of Solid Mechanics, Lund University, Lund, 22362, Sweden. ⁵Nelson Mandela Metropolitan University, Port Elizabeth, 6031, South Africa. ⁶University of Malta, Msida, MSD, 2080, Malta. ⁷J-PARC center, Japan Atomic Energy Agency, Tokai-mura, 319-1195, Japan. ⁸Space Sciences Laboratory, University of California at Berkeley, Berkeley, California, 94720, USA. ⁹Center for Electron Nanoscopy, Technical University of Denmark, Kgs. Lyngby, 2800, Denmark. ¹⁰Division of Materials Engineering, Lund University, Lund, 22362, Sweden. ¹¹Research Center for Neutron Science and Technology, CROSS, Tokai, Naka-gun, 319-1106, Japan. ¹²Applied Crystallography and Materials Science, Department of Earth and Environmental Sciences, Ludwig-Maximilians-Universität, München, 80333, Germany. ¹³Institut für Werkstofftechnik (Materials Engineering), Universität Kassel, Kassel, 34125, Germany. Correspondence and requests for materials should be addressed to S.S. (email: ssch@fysik.dtu.dk)

In the last twenty years, various nondestructive techniques have emerged to study 3D shape and orientation of the grains composing polycrystalline materials. At first, techniques employing X-rays were developed: three-dimensional X-ray diffraction microscopy (3DXRD), diffraction contrast tomography (DCT) and high energy X-ray diffraction (HEDM)^{6–8}. 3DXRD, DCT and HEDM allow investigation of micrometer- to millimeter-sized samples with resolutions ranging from tens of nanometers to micrometers.

More recently, neutron diffraction contrast tomography (nDCT) has been developed to study, at continuous neutron sources, millimeter-scale samples⁹. In nDCT, the sample is illuminated with a continuous, polychromatic neutron beam, and the diffracted signal is collected in backscattering Laue mode. The number and size of the grains that can be reconstructed using nDCT is limited by diffraction spots overlapping and blurring, which set a minimum grain size of 1 mm for a mosaicity of 0.1–0.2⁹. Despite providing a lower resolution than their X-ray counterparts, neutron imaging techniques have the advantage of being able to probe the bulk of millimeter- to centimeter sized samples. Moreover, the higher penetration capabilities of neutrons compared to X-rays are particularly important for engineering materials.

Here we present time-of-flight three-dimensional neutron diffraction (ToF 3DND). Compared with X-ray techniques, ToF 3DND allows to study larger samples and, through its ability to profit from pulsed spallation sources, has the potential to improve the resolution for neutron techniques in both space and in time. With ToF 3DND, the shape and orientation of grains with sizes ranging from 200 microns to several millimeters can be clearly reconstructed. The lower limit is given by the intrinsic spatial resolution of the imaging detector.

ToF 3DND utilizes a conventional imaging geometry in time-of-flight mode, providing intrinsic neutron energy resolution that enables the reconstruction of the 3D shape and orientation of the grains composing polycrystalline materials. This approach is a generalization of the X-ray based direct-beam DCT technique (DCT-I) developed by Ludwig *et al.*⁷. A comparison between DCT-I and ToF 3DND is available in the Supplementary Information, Sec. S7. ToF 3DND can be implemented both at dedicated ToF imaging beamlines and at ToF neutron diffractometers. In the latter case, the simultaneously available diffraction data may add significant information about individual grain strain states, mosaicity or twinning.

Principle

The attenuation of a neutron beam through a sample is the mechanism enabling transmission imaging. The attenuation by a specific material can be described by the *linear attenuation coefficient* Σ , which depends on the density N of the involved nuclei and on their absorption and scattering cross sections, σ_a and σ_s ¹⁰

$$\Sigma = N(\sigma_a + \sigma_s). \quad (1)$$

The total scattering cross section σ_s is a sum of the different elastic and the inelastic contributions, both consisting of a coherent (σ_{coh}) and incoherent (σ_{incoh}) part. In the range of cold and thermal neutrons, generally used for neutron imaging and diffraction since their wavelengths match the crystal lattice distance, for many crystalline materials the attenuation coefficient is dominated by the coherent elastic scattering cross section.

For a single bound nucleus, the total coherent scattering cross section can be written as $\sigma_{coh} = 4\pi b_n^2$, with b_n being the bound coherent scattering length. For crystals, which consist of a matrix of specifically ordered nuclei, the significant part of the cross section takes the form

$$\sigma_{coh,ela}(\tau) = \frac{4\pi^3 N}{k^2 V_0} \sum_{\tau} \frac{1}{\tau} |F(\tau)|^2, \quad (2)$$

where V_0 and $F(\tau)$ are the unit cell volume and the structure factor, respectively, with $\tau = 2\pi/d$ being the length of the reciprocal lattice vector relating to the lattice spacing d , $k = 2\pi/\lambda$ is the modulus of the wavevector and λ is the wavelength. Using the Miller indices (hkl), Eq. (2) can be rewritten as

$$\sigma_{coh,ela}(\lambda) = \frac{\lambda^2 N}{2V_0} \sum_{hkl} |F_{hkl}|^2 d_{hkl}. \quad (3)$$

Equation (2) is derived for a crystalline powder by averaging over a large number of crystallites with random isotropic orientation distribution. It hence integrates over all crystal orientations which fulfill, for a given wavelength λ , the Bragg condition

$$n\lambda = 2d \sin \theta. \quad (4)$$

In diffraction, the associated Debye-Scherrer cones are described by the delta function $\delta\left(1 - \frac{\tau^2}{2k^2} - \cos \theta\right)$, which defines the characteristic cross section for powder-like samples with specific Bragg edge patterns in transmission.

For a single crystal, only one orientation has to be taken into account, and the elastic coherent scattering cross section changes to

$$\sigma_{coh,ela}(\tau, k) = \frac{(2\pi)^3 N}{2V_0 k \tau} \sum_{\tau} |F(\tau)|^2 \delta(\tau^2 - 2k\tau \sin \theta), \quad (5)$$

where the delta function represents the Bragg equation. The cross section is different from zero only when the Bragg condition is fulfilled, that is for the incoming wavelengths

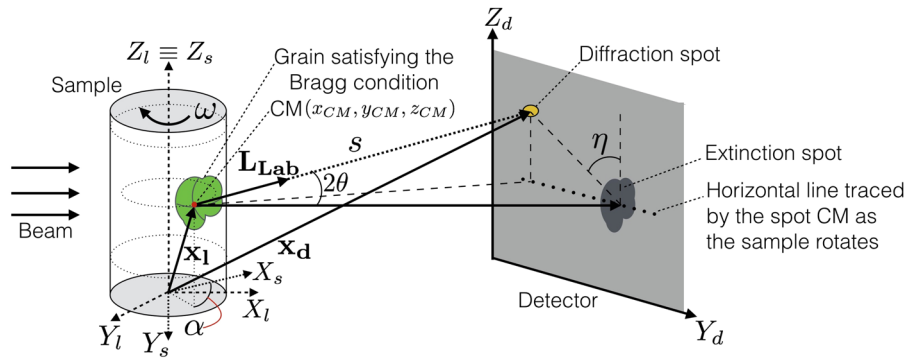


Figure 1. Experimental ToF 3DND setup. The sample is illuminated by a time-of-flight neutron beam and an imaging detector is installed in transmission geometry. When, at a sample rotation angle ω , a grain satisfies the Bragg condition, a region of missing intensity (*extinction spot*) is visible in transmission. The diffracted beam forms a bright *diffraction spot*. In the plot, the laboratory, sample and detector reference systems are denoted by (X_l, Y_l, Z_l) , (X_s, Y_s, Z_s) and (X_d, Y_d, Z_d) respectively. While the 3D shape of the grains can be reconstructed using extinction spots only, uniquely determining their orientation requires considering also the location of the diffraction spots. In real space, this position is determined by the direction of the diffraction vector \mathbf{L}_{Lab} , which connects the centre of mass (CM) of the grain, located by \mathbf{x}_l , with the centre of mass of the related diffraction spot. The relationship between \mathbf{x}_l and the position, in the laboratory reference system, of the centre of mass \mathbf{x}_d of the diffraction spot on the detector plane is $\mathbf{x}_d = \mathbf{x}_l + \mathbf{L}_{\text{Lab}} \cdot s$.

$$\lambda = \frac{2\pi}{k} = \frac{4\pi}{\tau} \sin \theta. \quad (6)$$

Contrary to the powder case, where the Bragg edge pattern in the wavelength-dependent cross section is independent of the sample orientation, in the single crystal case the cross section displays discrete Bragg peaks at distinct wavelengths, which depend on the orientation of the crystal with respect to the beam. For textured materials with powder-type diffraction patterns, an angle-dependent additional factor, derived from the corresponding orientation distribution function (ODF) of all crystallites in the sample, has to be added¹¹.

A sample consisting of an ensemble of crystallites with random orientation can be classified as powder-like if it is not possible to resolve the properties of the individual grains, due to insufficient spatial resolution of the available detector system. Vice versa, a sample can be classified as a polycrystal if at least part of the grains it contains have size above the spatial resolution. In this case, the shape and orientation of the grains can, in principle, be reconstructed directly and in 3D from a tomographic scan. In general, the flux available at existing neutron sources is lower than for x-rays at synchrotron sources, and the best spatial resolutions with neutrons is worse than these achieved with x-rays^{12,13}. As a consequence, a sample region can show a polycrystalline structure when studied with X-rays, and a powder-like structure when studied with neutrons. In the ToF 3DND case here reported, the grain size that can be resolved is limited to about 200 micrometers by the detector system used.

For a polycrystalline sample, the transmission signal can be expressed using a sum of discrete single crystal cross sections, and the number of observed Bragg peaks increases correspondingly to the number n of grains intersected by the beam¹⁴

$$\sigma_{\text{coh,ela}}(\lambda) = \sum_n \frac{(2\pi)^3 N}{2V_0 k \tau} \sum_{hkl} |F_{hkl}|^2 \delta(\tau^2 - 2k\tau \sin \theta_{n,hkl}). \quad (7)$$

If the sample consists of both polycrystal regions and powder-like regions, the measured cross section will be a sum of the cross sections given by Eqs (2) and (7).

When a grain in a polycrystalline sample satisfies the Bragg condition, the contribution to the attenuation signal is strong enough that missing intensity regions (*extinction spots*) become visible in transmission mode with sufficient wavelength resolution⁷ (see Fig. 1). In the approach presented in this article, the 3D shape and the orientation of the grains within a given sample are calculated from the distribution of the corresponding extinction and diffraction spots among the frames collected by the transmission detector at different rotation angles of the sample and wavelengths.

The extinction and diffraction spots are located by considering their signature in the transmission measurements, i.e. the “Bragg peaks” in the wavelength and angle dependent scattering cross section. Reconstruction of the individual grains in 3D is possible by using a broad wavelength range, and rotating the specimen to perform a tomographic sampling. Furthermore, orientation mapping and indexing of the individual grains can be determined by correlation of the extinction spots from the near field detector data. Good wavelength resolution over the broad wavelength band provides a large number of peaks, each contributing to the spatially resolved cross section.

Experimental

Setup at J-PARC. To collect information on the shape and location of the extinction spots, and on the wavelength where they are collected, a time-of-flight neutron beam is used¹⁵. With such a beam, the kinetic energy (and thus the wavelength) of a traveling neutron can be calculated by the time it takes it to fly between two fixed points whose distance is known.

The neutron experiments were conducted at beamline BL18, the single crystal ToF diffractometer SENJU, of the MLF at J-PARC, a short pulse neutron source^{16,17}. Data were acquired with the source operating respectively at 300 kW (Fe sample) and at 200 kW (Co-Ni-Ga sample). The instrument was chosen for its good wavelength resolution and large bandwidth. The short pulse combined with a moderator-to-detector distance of 34.8 m and the 25 Hz source frequency enables a wavelength resolution of 0.3% over a range of 4 Å (between 0.4 and 4.4 Å), selected by two bandwidth choppers.

At the sample position, the beam cross section has a radius of approximately 26 mm. ToF 3DND measurements require installing a high resolution ToF imaging detector^{12,18,19}, referred to as the *transmission detector*, placed a few centimeters behind the sample. The detector employs a microchannel plate (MCP) with an active area of $28 \times 28 \text{ mm}^2$, corresponding to 512×512 pixels, each with $55 \mu\text{m}$ size. The detector, suited for count rates of $>10 \text{ MHz}$ in ToF mode, and up to GHz in counting mode, provides approximately $100 \mu\text{m}$ intrinsic spatial resolution, paired with $<1 \mu\text{s}$ time resolution, which makes it essential for a wide range of neutron ToF imaging applications^{20–22}. Such a high spatial and temporal resolution is obtained by combining the microchannel plate technology with the Timepix chip²³, which is designed to detect relatively high input fluxes in time-of-flight mode with high spatial resolution. These performances are further improved by the MCP, which offers high detection efficiency (about 50% for thermal neutrons) and event localization within one pixel with no charge spread and no afterglow, which are responsible for performance degradation in some other devices^{18,19}. The transmission data were recorded using the Pixelman software package²⁴. The experimental geometry is sketched in Fig. 1.

As a reference sample, an ultrapure (99.98% purity) iron cylinder, 5 cm long and 1 cm in diameter, was used. The iron sample was obtained from a rod purchased from Goodfellow Cambridge Ltd. (Huntingdon, England), cold worked, cut, vacuum-sealed in quartz-glass capsules and heat treated at 900°C for 20 days to grow grains with size in the hundred of microns to millimeter range. The ToF 3DND algorithms were cross-checked using a cobalt-nickel-gallium (Co-Ni-Ga) sample, consisting of two stacked single-crystal cubes with a size of 4 mm^3 . With its very simple arrangement of the grains, the Co-Ni-Ga sample serves as a good validation of the indexing procedure.

The transmission detector recorded projections over 54 rotation angles over 180° , with an exposure time of 1 hour per projection. For a given projection, data were recorded in ToF histogram mode²⁶ relative to the neutron trigger pulse with the full ToF range of 36.35 ms, split into 2423 bins of $12.8 \mu\text{s}$. Measures were complemented by acquiring datasets with no sample in the beam (*open beam*), both before and after imaging the sample. Due to the long sample exposure, variations of the detection efficiency are expected for the transmission detector.

Electron backscatter diffraction. After being studied using ToF 3DND, the Fe sample was sliced longitudinally and radially into four pieces and the longitudinal surfaces were polished and imaged using electron backscatter diffraction (EBSD) in a scanning electron microscope (SEM)²⁷. The measurements were performed on a FEI (part of Thermo Fisher Scientific, Waltham, MA, USA) Nova NanoLab 600 microscope equipped with a Bruker (Billerica, MA, USA) e^- FlashHD EBSD detector. The data analysis was performed using CrystAlign by Bruker (Billerica, MA, USA), and TSL OIM AnalysisTM software by EDAX (Mahwah, NJ, USA).

Methods

Grain shape and juxtaposition. The approach used to reconstruct the 3D shape and juxtaposition of the grains within a sample combines ordinary and new procedures. While the pre-processing and 3D reconstruction procedures are fairly standard²⁸, most of the data processing solutions are tailored for ToF 3DND. The presented approach, developed for the Fe sample, was used in a simplified version for the Co-Ni-Ga sample.

Data analysis algorithms were developed using MATLAB and Image Processing Toolbox Release 2016a, The MathWorks, Inc. (Natick, MA, USA). Basic image processing was performed using FIJI²⁹ and Adobe Photoshop by Adobe System (San Jose, CA, USA). Grain structures were rendered in 3D using Paraview³⁰.

The image datasets acquired by the transmission detector were pre-processed using a dead-time correction algorithm³¹, and normalized by the relative open beam and using a rolling median. Pre-processed images were then refined using the multiplicative rotational filter Murofi (to be published in a separate article), specifically developed to segment weak extinction spots with varying shape and intensity in transmission images. For a given grain, the heterogeneity of the shapes is due to the fact that, for a given projection, the corresponding extinction spots are observed in a number of wavelength intervals, with continuously changing shape around a Bragg peak. This spreading, visible with the chosen temporal resolution, is ultimately due to resolution effects and to the mosaicity of the grains, estimated from EBSD to be less than 2° . In the present work, we therefore integrate over the full Bragg peak. Resolving the local mosaicity is a natural extension of the methodology.

After being filtered and binarized (see Fig. 2), the projections are processed to select the extinction spots. As a result of the spreading over ToF, spots related to different grains may overlap, which makes small grains harder to identify and to reconstruct than big ones, because their extinction spots are more easily covered. For a sample composed of both small and big grains, such as the Fe sample, extinction spots are processed in separate groups, each covering a different range of area (A) values. In the Fe case, extinction spots are divided in to four groups, depending on their area: between 100 and 500 pixels, between 100 and 1000 pixels, between 100 and 2000 pixels, and greater than 1000 pixels. To avoid missing grains, there is a partial overlap between the different area intervals. Grouping the extinction spots is not necessary when the investigated sample is made of grains with similar size, as in the Co-Ni-Ga case.

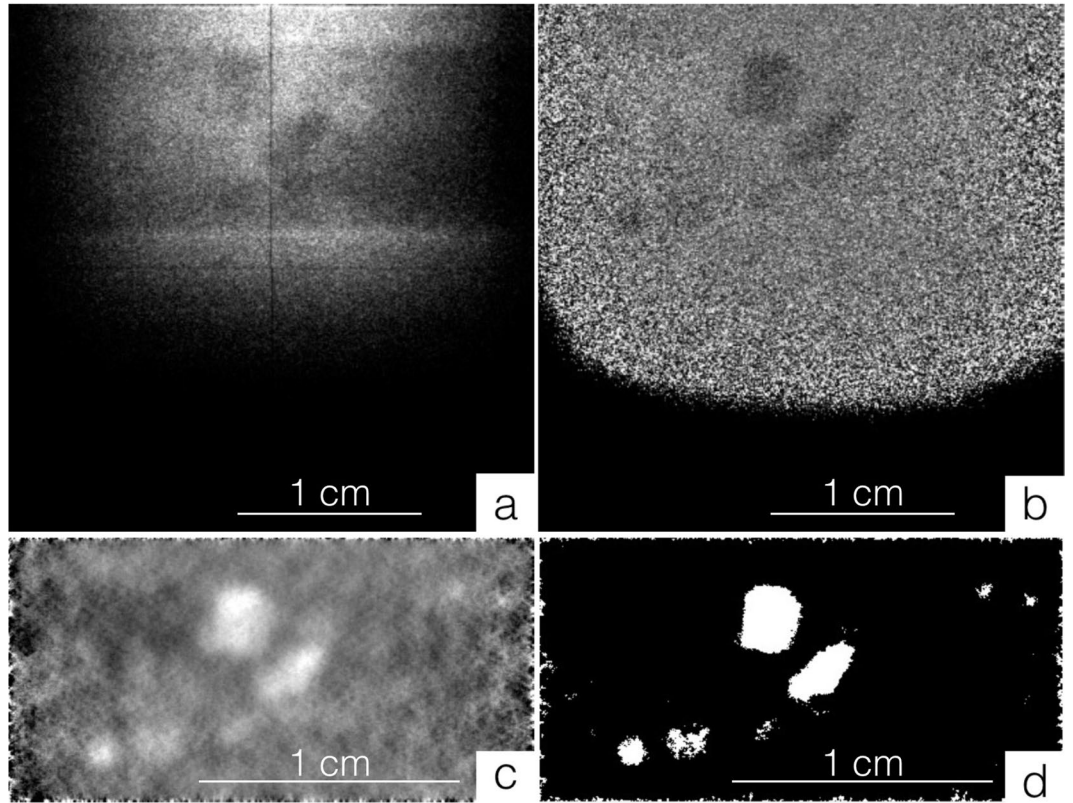


Figure 2. Image processing for extinction spots segmentation. The multiplicative rotational filter Murofi (to be published in a separate article) was developed to locate extinction spots in transmission images collected using a ToF beam. **(a)** Raw image collected studying the Fe sample. **(b)** **a** after pre-processing. **(c)** **b** after being filtered using Murofi. **(d)** **c** binarized using a threshold value. In **c** and **d**, only the sample region is shown.

Grain sorting. For each projection, it is necessary to group extinction spots recorded at different wavelengths that are related to the same grain. Spots are grouped by similarity, using a criterion built on morphological operations (see Supplementary Fig. S1)^{32,33}. Similar spots are combined and possible duplicates (with centre of mass very close) merged. For each grain, the final combination of the related extinction spots is considered as the best estimate of its projected shape at a given rotation angle.

When a sample is illuminated by a neutron beam and rotated around its vertical axis, the centre of mass of the extinction spots related to a given grain (corresponding, roughly, to the projection of the centre of mass of the grain) moves along a horizontal line on the detector plane $y_d z_d$ (see Fig. 1). This trajectory corresponds to a sinusoid in the $y_d z_d \omega$ -space, with ω being the rotation angle of the sample. Extinction spots are divided in groups considering the distribution of their centers of mass in the $y_d z_d \omega$ -space: in that space, spots related to the same grain have centre of mass distributed around the same sinusoid. To account for different sinusoids, a rolling window sweeps the z_d -axis. For each interval, the Hough transform^{34,35} is used to calculate the corresponding sinusoids in the $y_d \omega$ -plane.

For a given grain with centre of mass $\mathbf{r}_0 = \begin{pmatrix} x_{CM} \\ y_{CM} \\ z_{CM} \end{pmatrix}$ in the sample reference system, the centre of mass $\mathbf{r}_d = \begin{pmatrix} x_d \\ y_d \\ z_d \end{pmatrix}$ in the detector reference system is given by $\mathbf{r}_d = \Omega \mathbf{r}_0$, where Ω is the left-handed rotation matrix around the z -axis by an angle ω

$$\Omega = \begin{pmatrix} \cos \omega & \sin \omega & 0 \\ -\sin \omega & \cos \omega & 0 \\ 0 & 0 & 1 \end{pmatrix}, \quad (8)$$

which is the transformation from the sample reference system to the laboratory reference system.

As the sample rotates, the curve described on the detector surface by the centre of mass of the grain is defined by the equations

$$y_d = -x_{CM} \sin \omega + y_{CM} \cos \omega = R \cdot \cos(\omega + \alpha) \quad (9)$$

$$z_d = z_{CM}, \quad (10)$$

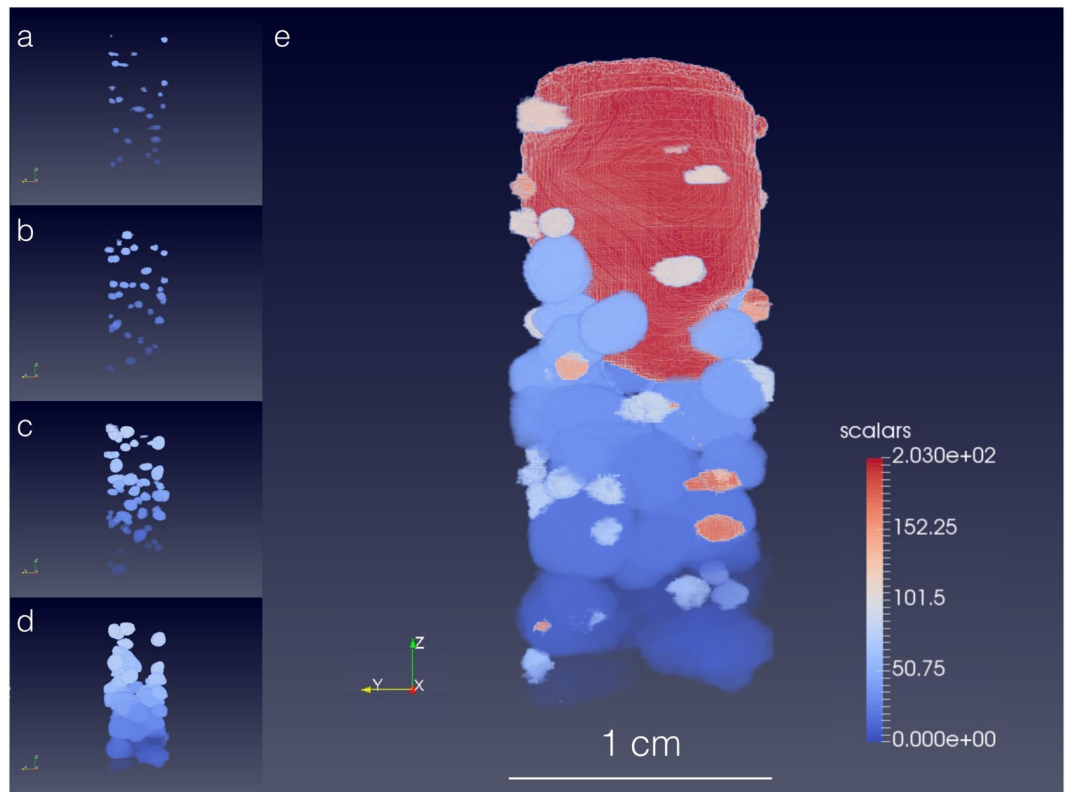


Figure 3. Partial and final reconstructions of the Fe sample investigated at SENJU. **(a–d)** To reconstruct both small and big grains, extinction spots were divided in four size intervals and processed separately. Four 3D reconstructions are obtained by backprojection: **(a)** for spots with an area between 100 and 500 pixels, **(b)** for spots with an area between 500 and 1000 pixels, **(c)** for spots with an area between 1000 and 2000 pixels, and **(d)** for spots with an area greater than 2000 pixels. In each reconstruction, different grains are shown in different colors. **(e)** The final reconstruction, obtained by combining the partial reconstructions, consists of 108 grains, each represented in a different color. The upper part of the sample includes a large powder-like region, probably due to oxidation effects occurred during the sample heating treatment. The powder-like region is reconstructed using an inverse Radon transform.

with $R = \sqrt{x_{CM}^2 + y_{CM}^2}$. ω and α are, respectively, the sample rotation angle at which a given projection has been collected and the angle, in the sample reference system, describing the position of the centre of mass of the grain in the $x_s y_s$ -plane using polar coordinates. To group the centre of mass points, we selected a region around the calculated $y_d = R \cdot \cos(\omega + \alpha)$ curves. The parameters R and α are returned by the Hough transform, which represents points in the ωy_d -space as curves in the $R\alpha$ -space.

3D reconstruction. Once the extinction spots related to a given grain are grouped, the 3D shape of the grain can be reconstructed by back-projection. Different grain shapes are reconstructed separately and then assembled in a unique volume. If the extinction spots are divided in a number of size intervals and separately processed, several partial reconstructions are obtained. These are combined in a final reconstruction using a Russian-doll-like approach: if a grain is contained within a larger grain, it is considered part of it. If two grains from different reconstructions partially overlap, they are considered as a single entity if the centre of mass of one is positioned inside the volume of the other.

The top of the Fe sample contains a large powder-like region made of crystallites with random orientations, probably due to oxidation effects of the oxygen trapped when sealing the quartz capsules. While the grains give transmission contrast only for certain (ω, λ) combinations, the powder-like region has a fingerprint that is recorded at all ω and λ : being formed by randomly oriented crystallites, for each (ω, λ) combination there is a number of crystallites which satisfy the Bragg condition. As a consequence, the powder-like region gives a contrast that cannot be given by the grains, and its reconstruction complements the reconstruction of the grains.

The powder-like volume is reconstructed by adding, for each projection, all normalized images, rescaling the sum and applying an inverse Radon transform^{36,37}. The resulting images are then combined in a 3D volume by backprojection. The powder-like region is included in the final reconstruction in a way which preserves the shape of the grains. The uncertainty in the reconstruction of the powder-like volume is due to the limited number of considered projections (48). The partial and final reconstructions of the iron sample are shown in Fig. 3. The final 3D reconstruction is also available in the Supplementary Video. The reconstructed powder-like region well

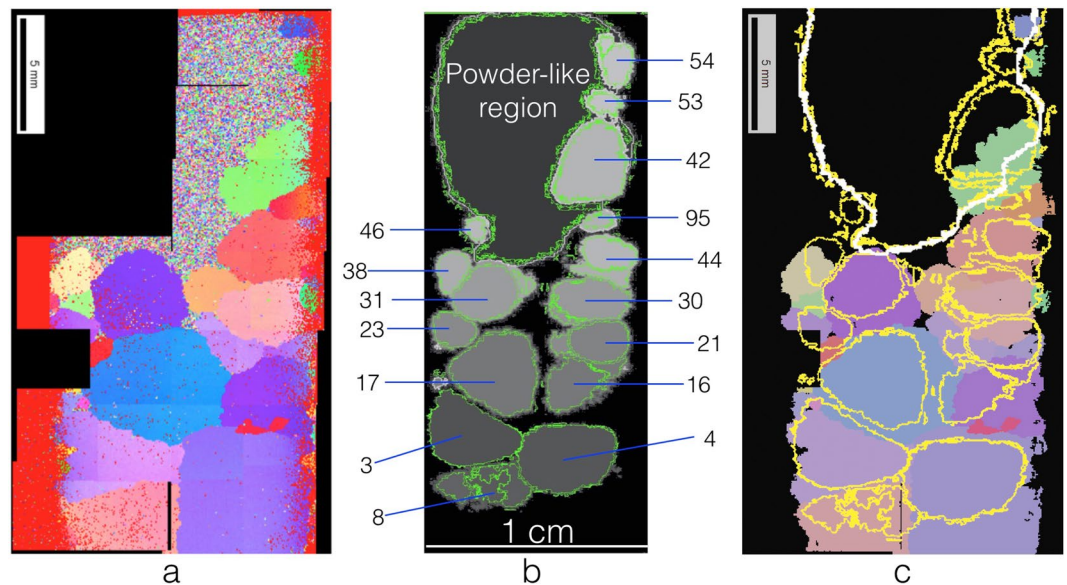


Figure 4. Validation of the ToF 3DND shape reconstruction algorithms. A vertical slice of the 3D reconstruction of the Fe sample is compared with the 2D map obtained by electron backscattering diffraction (EBSD) after cutting the sample in two both longitudinally and radially. **(a)** EBSD map of a vertical sample slice (half length), with different orientations (and thus grains) shown in different colors. A powder-like region is visible at the top-right of the slice. **(b)** Corresponding slice from the ToF 3DND reconstruction, where the powder-like volume was added in a way to preserve the shape of the grains. The ID number of each grain is indicated. **(c)** EBSD map with the perimeter of the grains from the 3DND reconstruction superimposed. The outline of the grains from **b** is plotted in yellow and, in the upper part, the outline of the powder-like region, reconstructed without preserving the shape of the grains, is shown in white. While the EBSD map in **a** shows the raw data, the one in **c** shows, for each grain, the average orientation. In **c**, both powder-like and non-measured regions are shown in black.

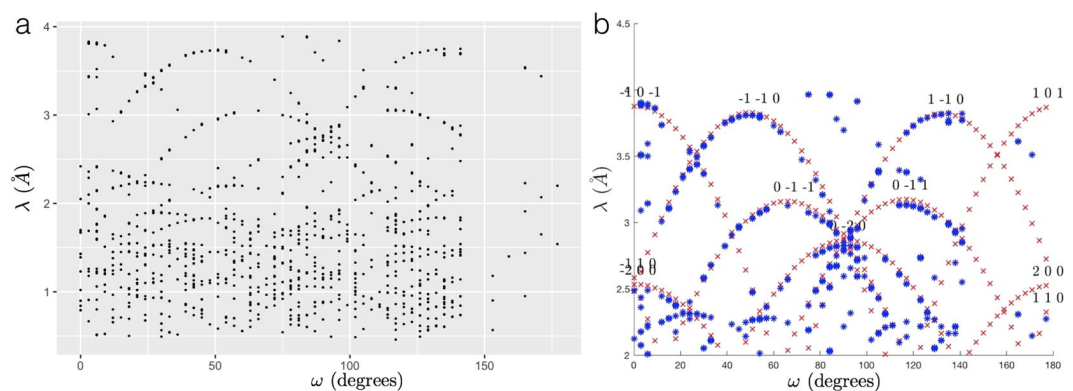


Figure 5. Grain indexing based on extinction spots distribution. The images show the raw **(a)** and fitted **(b)** distribution, in the $\omega\lambda$ -plane, of the extinction spots belonging to one of the grains in the investigated iron sample. ω is the sample rotation angle and λ is the centre of the neutron wavelength interval in which a given extinction spot is visible. **(b)** Determining the equation of the curves along which the points are distributed is the first step to find the orientation of the corresponding grain. Different curves are related to different hkl families.

fits with the portion of the reconstructed sample containing no grains and it confirms the powder-like region observed in the EBSD measurements (see Fig. 4).

Grain orientation. The procedure developed to calculate the crystallographic orientation of the grains (*indexing*) is based on fitting the distribution of the center of mass of the extinction spots in the $\omega\lambda$ -plane.

In the $\omega\lambda$ -plane, extinction spots are distributed along multiple curves (see Fig. 5). Such a distribution can be fitted by using a forward model which calculates the curves in the $\omega\lambda$ -space. The grain orientation is the

orientation that minimizes the distance of the curves from the experimental values. The starting equations are Eq. (6), Bragg's law, and the diffraction equation⁶

$$G = \frac{d}{2\pi} \Omega U \mathcal{B} h, \quad (11)$$

where $|G| = 1$, $d = \lambda/2\pi$ is the spacing between the lattice planes, Ω is the left-hand rotation matrix, U is the orientation matrix, $h = \begin{pmatrix} h \\ k \\ l \end{pmatrix}$ and \mathcal{B} is the matrix transforming the hkl lattice into reciprocal space.

Combining Eqs (4) and (11), it is possible to write the functions of the fitting curves

$$\lambda(\omega) = -\frac{4\pi}{|\mathcal{B}h|^2} (A \cos \omega + B \sin \omega), \quad (12)$$

where the coefficients A and B , constant for a given hkl family, are functions of the elements of U and of $\mathcal{B}h$. For more details, see Supplementary Sec. S3.

Indexing procedure. Eq. (12) returns, for a number of possible orientations U_i , the relative functions $\lambda_i(\omega)$ for a number of chosen hkl sets. Different $\lambda_i(\omega)$ curves are tested to fit the distribution of points in the $\omega\lambda$ -space, applying a forward model, and the orientation which best fits the experimental values is chosen. The procedure is outlined in detail in the Supplementary Sec. S4. An efficient way to test all possible orientations is to sample the fundamental zone of the Rodrigues space, which for the cubic crystal system is a truncated cube of size $2 \cdot (\sqrt{2} - 1)$ ^{38–40}. The selected orientation can be iteratively refined by sampling, with smaller steps, a selected volume in the fundamental zone built around the previously identified orientation vector.

Since data are acquired using only one rotation axis, a two-fold ambiguity exists in the determination of the crystallographic orientation (see Supplementary Sec. S5). This ambiguity can be solved by considering the position of the diffraction spots that are recorded on the transmission detector in forward direction.

Let us introduce the two vectors G^r and L . G^r is the reciprocal vector and L is the direction, in the laboratory reference system, of the diffraction vector in real space (see Fig. 1). The vectors are defined as⁴¹

$$G^r = \Omega^{-1} G \quad (13)$$

$$L_{\text{Lab}} = \Omega L = \Omega(2G^r + \Omega^{-1} l), \quad (14)$$

with $G = \frac{\lambda}{4\pi} \Omega U \mathcal{B} h$ as presented in Eq. (11).

For a given grain with known centre of mass position, L_{Lab} dictates the position of the related diffraction spot on the detector plane as a function of U and hkl (see Fig. 1). Considering the limited portion of diffraction spots collected by the transmission detector, the orientation of a grain can be uniquely determined by fitting the experimental data using L_{Lab} (see Fig. 6).

Data Availability. The datasets generated during and/or analyzed during the current study are available from the corresponding author on reasonable request.

Results

Figure 3 shows, in 3D, the internal structure of the Fe sample investigated using ToF 3DND. The sample consists of 108 grains, with volume ranging from $1.49 \cdot 10^{-2} \text{ mm}^3$ to 59.1 mm^3 , and a large powder-like volume. The grain boundaries are reconstructed with a maximum position uncertainty of about 600 micrometers (see Supplementary Sec. S6 for more details). The data acquisition setup did not allow to locate enough diffraction spots to uniquely determine the orientation of the grains. This limitation can be overcome by partially masking the incoming beam, to illuminate the sample only and reduce the background from the direct beam, or by introducing a second rotation axis perpendicular to the Z_s -axis.

When studying the Co-Ni-Ga sample it was possible to localize the collected diffraction spots and thus to uniquely determine the orientation of the two grains the sample is made of. To check the validity of the grain orientations, they were compared with the results of EBSD. The agreement between the different methods of calculating the grain orientation is measured by considering the misorientation between the grains (ϕ_{\min}), defined as

$$\phi_{\min} = \min_i [\arccos(\frac{\text{Tr}(U_1 E_i U_2') - 1}{2})], \quad (15)$$

where U_1 and U_2 are orientation matrices related to different grains, Tr is the matrix trace and E_i are the space group generators, i.e. the symmetry operators of a given crystalline structure⁴². From the ToF 3DND data, the misorientation is 40° , and from the EBSD data it is 40.5° , using Bunge's convention⁴³. Considering that the uncertainty from the EBSD measurements is between 1° and 2° , the agreement between the two misorientation values is good. This validates the developed indexing method.

The algorithms developed to reconstruct the shape of the grains were cross-checked by comparing the outline of the grains returned by *post-mortem* EBSD with the perimeter of the grains in the related vertical slice of the 3D sample reconstruction, as shown in Fig. 4. The two maps show good agreement. In the EBSD grain map, part of the sample shows a powder-like structure, which corresponds to the powder-like region added by conventional reconstruction to the ToF 3DND grain map. Moreover, the reconstruction algorithms developed for the Fe

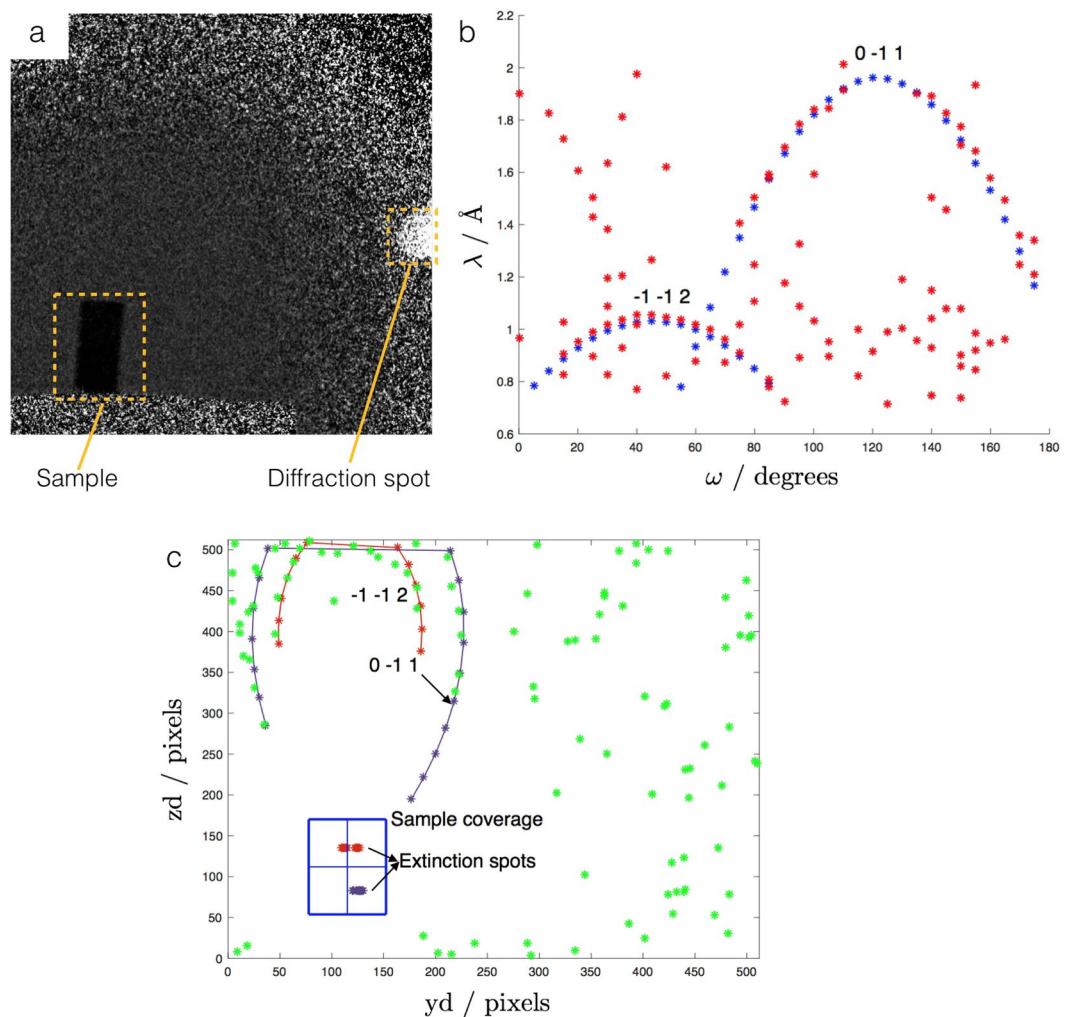


Figure 6. Determination of the grain orientations using diffraction spots. For the Co-Ni-Ga sample, it was possible to uniquely define the orientation of the grains by using the position of the related diffraction spots on the detector. **(a)** Image recorded illuminating the Co-Ni-Ga sample, with a visible diffraction spot. **(b)** Distribution of the detected extinction spots (in red) as a function of the sample rotation angle ω and of the wavelength λ . The distribution was well fitted for the hkl values $-1-12$ and $0-11$, each related to a different grain. The points of the fitting curves are shown in blue. **(c)** Using the predicted positions of the diffraction spots on the MCP detector (determined by x_d , see Fig. 1), it was possible to fit the experimental values (in green) and thus to uniquely define the orientation of the grains. The fitting curves are relative to the hkl values $1-12$ and $0-11$.

sample are also verified by reconstructing the shape and juxtaposition of the two grains composing the Co-Ni-Ga sample. Supplementary Fig. S3 shows two grain maps of the Co-Ni-Ga sample, respectively obtained using ToF 3DND and EBSD.

Discussion and Conclusion

ToF 3DND is a new, nondestructive, 3D neutron imaging technique that can return information on both the shape and orientation of the grains in polycrystalline materials. ToF 3DND is particularly adapted to studies of samples that cannot be investigated using X-ray methods due to, for example, large dimensions and high X-ray attenuation, e.g., centimeter-sized metallic specimens containing grains in the hundreds of microns to millimeter scale. ToF 3DND also has advantages over another recent neutron-diffraction based imaging approach, namely nDCT, in that it has less limitations in terms of the number and size of the grains (nDCT is limited by diffraction spots overlapping and blurring, which set a minimum grain size of 1 mm for a mosaicity of $0.1-0.2^\circ$)⁹. In fact, ToF 3DND allows 10 times more grains to be resolved than any earlier 3D neutron diffraction approach and with better spatial resolution. This performance is possible by adding relatively little additional equipment to a time-of-flight neutron beamline, involving only an imaging detector with high spatial and temporal resolution.

In this article we have outlined the ToF 3DND technique and demonstrated its application with the successful reconstruction of 108 grains in a sample of iron, which was validated by comparison with a grain map obtained by EBSD. Furthermore, we uniquely determined the orientation of two grains composing a Co-Ni-Ga sample,

as confirmed by EBSD. These developments open up possibilities to investigate other polycrystalline materials that could not be studied with previously available techniques. By correlating information from ToF 3DND and from recently developed tools for microstructure analysis of mosaic crystals⁴⁴, it will be possible to visualize in 3D how lattice parameters, mosaicity, extinction factors and crystal orientation vary across a sample. ToF 3DND could also be used to study geological samples or to investigate the formation of meteorites. As a non-destructive approach, ToF 3DND will enable *in-situ*, time-resolved studies of multi-grain structures under external forces (e.g. loading) and might be used to analyze force chains in granular materials^{45–48}. Combining ToF 3DND with neutron Bragg-edge tomography or polarized neutron imaging of magnetic domains^{49,50} would pave the way for a new generation of multidimensional maps showing, on top of the grain shape and orientation, how phase and magnetic domains are arranged in a given sample.

An extension of the described ToF 3DND approach is to combine the information from a transmission detector with data from diffraction detectors. If both data sets are available, the grain orientations can be determined from the diffraction data and used to select the transmission data frames containing the associated extinction spots. In this way, it should be possible to reconstruct small grains that are difficult to observe using the transmission detector alone. Therefore, by including both transmission and diffraction data, ToF 3DND has the potential to reconstruct grain maps for samples made of thousands of grains. This approach will be presented in a forthcoming paper.

The advanced pulsed spallation sources have not yet reached their power limits and hence higher flux densities, which will enable faster and more accurate measurements, are still to be achieved. Moreover, the detector technology that is used in this work is still progressing and an improvement in spatial resolution up to about half an order of magnitude can be expected in the near future. Combined, these advancements will improve the ToF 3DND resolution, extending the size range of grains that can be studied towards smaller grains, potentially of the order of some tens of micrometers. Such technical progress will also enable mosaicity to be mapped within grains to investigate intra-granular crystallographic orientations variations, paving the road for multiscale mosaicity maps in combination with, for example, 3DXRD. Moreover, a significant advance can also be expected from the combination with simultaneous far-field neutron diffraction measurements.

While ToF 3DND offers a lower spatial resolution compared to equivalent X-ray techniques (such as 3DXRD, DCT and HEDM), the use of neutrons facilitate studies of centimeter-sized specimens that are challenging for X-ray methods, either due to their size or to the material, e.g. metallic or geological samples or energy devices. In the latter, the neutron cross-section for key elements (such as lithium) is significantly higher for neutrons than for X-rays. Hence, ToF 3DND can be seen as a complementary technique to the X-ray counterparts.

References

- Clemens, H., Mayer, S. & Staron, P. Microstructure and Properties of Engineering Materials. *Neutrons and Synchrotron Radiation in Engineering Materials Science: From Fundamentals to Material and Component Characterization* 1–20 (2008).
- Bennett, J.M., and Bellingham International Society for Optical Engineering. *Surface Measurement and Characterization* (SPIE, 1989).
- Haynes, R. *Optical microscopy of materials* (Springer Science & Business Media, 2013).
- Alkemper, J. & Voorhees, P. W. Quantitative serial sectioning analysis. *Journal of microscopy* **201**, 388–394 (2001).
- Zankel, A., Wagner, J. & Poelt, P. Serial sectioning methods for 3D investigations in materials science. *Micron* **62**, 66–78 (2014).
- Poulsen, H. F. *et al.* Three-dimensional maps of grain boundaries and the stress state of individual grains in polycrystals and powders. *Journal of Applied Crystallography* **34**, 751–756 (2001).
- Ludwig, W., Schmidt, S., Lauridsen, E. M. & Poulsen, H. F. X-ray diffraction contrast tomography: a novel technique for three-dimensional grain mapping of polycrystals. I. Direct beam case. *Journal of Applied Crystallography* **41**, 302–309 (2008).
- Suter, R., Hennessy, D., Xiao, C. & Lienert, U. Forward modeling method for microstructure reconstruction using X-ray diffraction microscopy: Single-crystal verification. *Review of scientific instruments* **77**, 123905 (2006).
- Peetermans, S., King, A., Ludwig, W., Reischig, P. & Lehmann, E. H. Cold neutron diffraction contrast tomography of polycrystalline material. *Analyst* **139**, 5766–5772 (2014).
- Fermi, E., Sturm, W. & Sachs, R. The transmission of slow neutrons through microcrystalline materials. *Physical Review* **71**, 589 (1947).
- Santisteban, J. R. *et al.* Texture imaging of zirconium based components by total neutron cross-section experiments. *Journal of Nuclear Materials* **425**, 218–227 (2012).
- Tremis, A. S., Vallerga, J. V., McPhate, J. B., Siegmund, O. H. W. & Raffanti, R. High Resolution Photon Counting With MCP-Timepix Quad Parallel Readout Operating at >1 KHz Frame Rates. *IEEE Transactions on Nuclear Science* **60**, 578–585 (2013).
- Reischig, P. *et al.* Advances in x-ray diffraction contrast tomography: flexibility in the setup geometry and application to multiphase materials. *Journal of Applied Crystallography* **46**, 297–311 (2013).
- Santisteban, J., Edwards, L., Steuwer, A. & Withers, P. Time-of-flight neutron transmission diffraction. *Journal of applied crystallography* **34**, 289–297 (2001).
- Anderson, I. S., McGreevy, R. L. & Bilheux, H. Z. Neutron imaging and applications. *Springer Science+Business Media* **200**, 987–0 (2009).
- Nagamiya, S. Introduction to J-PARC. *Progress of Theoretical and Experimental Physics* **2012**, 02B001 (2012).
- Oikawa, K. *et al.* Instrument Design and Performance Evaluation of a New Single Crystal Neutron Diffractometer SENJU at J-PARC. *JPS Conference Proceedings* **1**, 014013 (2014).
- Fraser, G. & Pearson, J. The direct detection of thermal neutrons by imaging microchannel-plate detectors. *Nuclear Instruments and Methods in Physics Research Section A: Accelerators, Spectrometers, Detectors and Associated Equipment* **293**, 569–574 (1990).
- Tremis, A. S., Feller, W. B. & Downing, R. G. Efficiency optimization of microchannel plate (mcp) neutron imaging detectors. i. square channels with 10 b doping. *Nuclear Instruments and Methods in Physics Research Section A: Accelerators, Spectrometers, Detectors and Associated Equipment* **539**, 278–311 (2005).
- Strobl, M. *et al.* Quantitative Neutron Dark-field Imaging through Spin-Echo Interferometry. *Scientific reports* **5** (2015).
- Tremis, A. S. *et al.* High resolution neutron resonance absorption imaging at a pulsed neutron beamline. *IEEE Transactions on Nuclear Science* **59**, 3272–3277 (2012).
- Tremis, A. S., Kockelmann, W., Pooley, D. E. & Feller, W. B. Spatially resolved remote measurement of temperature by neutron resonance absorption. *Nuclear Instruments and Methods in Physics Research Section A: Accelerators, Spectrometers, Detectors and Associated Equipment* **803**, 15–23 (2015).
- Llopart, X., Ballabriga, R., Campbell, M., Tlustos, L. & Wong, W. Timepix, a 65k programmable pixel readout chip for arrival time, energy and/or photon counting measurements. *Nuclear Instruments and Methods in Physics Research Section A: Accelerators, Spectrometers, Detectors and Associated Equipment* **581**, 485–494 (2007).

24. Turecek, D., Holy, T., Jakubek, J., Pospisil, S. & Vykydal, Z. Pixelman: a multi-platform data acquisition and processing software package for medipix2, timepix and medipix3 detectors. *Journal of Instrumentation* **6**, C01046 (2011).
25. Vollmer, M. *et al.* Damage evolution in pseudoelastic polycrystalline Co–Ni–Ga high-temperature shape memory alloys. *Journal of Alloys and Compounds* **633**, 288–295 (2015).
26. Ohhara, T. *et al.* SENJU: a new time-of-flight single-crystal neutron diffractometer at J-PARC. *Journal of Applied Crystallography* **49** (2016).
27. Schwartz, A. J., Kumar, M., Adams, B. L. & Field, D. P. *Electron backscatter diffraction in materials science*, vol. 2 (Springer, 2009).
28. Strobl, M. *et al.* Advances in neutron radiography and tomography. *Journal of Physics D: Applied Physics* **42**, 243001 (2009).
29. Schindelin, J. *et al.* Fiji: an open-source platform for biological-image analysis. *Nature methods* **9**, 676–682 (2012).
30. Ahrens, J., Geveci, B., Law, C., Hansen, C. & Johnson, C. 36-ParaView: An End-User Tool for Large-Data Visualization. *The Visualization Handbook* 717 (2005).
31. Tremsin, A. S., Vallerger, J. V., McPhate, J. B. & Siegmund, O. H. W. Optimization of Timepix count rate capabilities for the applications with a periodic input signal. *Journal of Instrumentation* **9**, C05026 (2014).
32. Russ, J. C. *The image processing handbook* (CRC press, 2016).
33. Sonka, M., Hlavac, V. & Boyle, R. *Image processing, analysis, and machine vision* (Cengage Learning, 2014).
34. Haidekker, M. *Advanced biomedical image analysis* (John Wiley & Sons, 2011).
35. Hough, P. V. C. Machine analysis of bubble chamber pictures. In *International conference on high energy accelerators and instrumentation*, vol. 73 (1959).
36. Radon, J. Über die Bestimmung von Funktionen durch ihre Integralwerte längs gewisser Mannigfaltigkeiten. *Berichte über die Verhandlungen der Königlich-Sächsischen Akademie der Wissenschaften zu Leipzig, Mathematisch-Physische Klasse [Reports on the proceedings of the Royal Saxonian Academy of Sciences at Leipzig, mathematical and physical section]* **69**, 262–277 (1917).
37. Radon, J. On the determination of functions from their integral values along certain manifolds. *IEEE transactions on medical imaging* **5**, 170–176 (1986).
38. Frank, C. Orientation Mapping: 1987 MRS Fall Meeting Von Hippel Award Lecture. *MRS Bulletin* **13**, 24–31 (1988).
39. Morawiec, A. & Field, D. P. Rodrigues parameterization for orientation and misorientation distributions. *Philosophical Magazine A* **73**, 1113–1130 (1996).
40. He, Y. & Jonas, J. J. Representation of orientation relationships in Rodrigues–Frank space for any two classes of lattice. *Journal of Applied Crystallography* **40**, 559–569 (2007).
41. Schmidt, S. Grainspotter: a fast and robust polycrystalline indexing algorithm. *Journal of Applied Crystallography* **47**, 276–284 (2014).
42. Rupp, B. *Biomolecular crystallography: principles, practice, and application to structural biology* (Garland Science, 2009).
43. Maitland, T. & Sitzman, S. *Electron backscatter diffraction (EBSD) technique and materials characterization examples*, vol. 14 (Springer Berlin, 2007).
44. Malamud, F. & Santisteban, J. R. Full-pattern analysis of time-of-flight neutron transmission of mosaic crystals. *Journal of Applied Crystallography* **49** (2016).
45. Peters, J., Muthuswamy, M., Wibowo, J. & Tordesillas, A. Characterization of force chains in granular material. *Physical Review E* **72**, 041307 (2005).
46. Wensrich, C. M. *et al.* Force chains in monodisperse spherical particle assemblies: Three-dimensional measurements using neutrons. *Physical Review E* **90**, 042203 (2014).
47. Hall, S. & Wright, J. Three-dimensional experimental granular mechanics. *Géotechnique Letters* **5**, 236–242 (2015).
48. Hurley, R., Hall, S., Andrade, J. & Wright, J. Quantifying interparticle forces and heterogeneity in 3D granular materials. *Physical Review Letters* **117**, 098005 (2016).
49. Woracek, R. *et al.* Neutron Bragg Edge Tomography for Phase Mapping. *Physics Procedia* **69**, 227–236 (2015).
50. Kardjilov, N. *et al.* Three-dimensional imaging of magnetic fields with polarized neutrons. *Nature Physics* **4**, 399–403 (2008).

Acknowledgements

A.C., E.B.K., M.Sa., P.M.L. and S.S. thank DANSCATT for financial support. The PhD project of A.C. was partially financed by ESS. The neutron experiments at the Materials and Life Science Experimental Facility of the J-PARC were performed under a user program (2014A0070 and 2014B0132). P.K. and T.N. thank the Deutsche Forschungsgemeinschaft (DFG), contract NI1327/3-2.

Author Contributions

ToF 3DND was conceived by S.S. and M.St. The experiments were prepared by A.C., S.S., E.B.K., P.W., R.K., A.S. and S.H. Measurements at J-PARC were conducted by A.C., S.S., A.T., R.K., M.St., E.B.K., P.M.L., T.S., T.H., T.M., M.Sa., P.K., P.M.K. and P.M.L. The samples were prepared and characterized *post-mortem* by A.C., A.B.F., S.I., P.K., P.M.K., T.N. and W.W.S. Algorithm development as well as data analysis was done by A.C. and S.S. The manuscript was prepared by A.C., M.St. and S.S. All authors reviewed the manuscript.

Additional Information

Supplementary information accompanies this paper at doi:10.1038/s41598-017-09717-w

Competing Interests: The authors declare that they have no competing interests.

Publisher's note: Springer Nature remains neutral with regard to jurisdictional claims in published maps and institutional affiliations.



Open Access This article is licensed under a Creative Commons Attribution 4.0 International License, which permits use, sharing, adaptation, distribution and reproduction in any medium or format, as long as you give appropriate credit to the original author(s) and the source, provide a link to the Creative Commons license, and indicate if changes were made. The images or other third party material in this article are included in the article's Creative Commons license, unless indicated otherwise in a credit line to the material. If material is not included in the article's Creative Commons license and your intended use is not permitted by statutory regulation or exceeds the permitted use, you will need to obtain permission directly from the copyright holder. To view a copy of this license, visit <http://creativecommons.org/licenses/by/4.0/>.

© The Author(s) 2017